

METAL ROOFING TOOLS AND ACCESSORIES

METAL PLUS

LLC

2023

WUKO

DEKS
A Skellerup Industries Company

Malco
Geocel
Setting the Standard

LAKESIDE
CONSTRUCTION FASTENERS

GSSI
SEALANTS



ALL OF OUR
BRACKETS ARE
MADE IN THE USA!



BERGER
QUALITY BUILDING PRODUCTS SINCE 1874

S-5!
The Right Way!

THE WORLD'S BEST
STANDING SEAM
METAL ROOFING BRACKETS!

USA
Universal Safety Anchor
FOR STANDING SEAM ROOFS
Product Line of
METAL PLUS LLC

860-379-1327

METALPLUSLLC.COM

TABLE OF CONTENTS

International Distributors 4
 About Metal Plus LLC 5
 Metal Plus Bracket Overview 6-7

Metal Plus Brackets

Ultimate Bracket 8
 Big Boys Bracket 8
 Roofer’s Helper 9
 Package Starter Kit 9

Safety Equipment

Universal Safety Anchor 12-13
 Myth of the 5000 lb. Anchor Point 14-15

S-5!® Snow Retention

S-5! ColorGuard® Color Strips 16
 S-5! Punched Crossmember 17
 S-5! Unpunched Crossmember 17
 S-5! VersaClip 17
 S-5! SnoClip II 17
 S-5! SnoClip III 17
 S-5! SnapClip II 17
 S-5! SnapClip III 17
 S-5! DualPipe™ w/Splice 18
 S-5! DualBracket™ 18
 S-5! DualClip II™ 18
 S-5! DualClip III™ 18
 S-5! DualCollar™ w/Endcaps 18
 S-5! Brass SnoRail™ and Brass SnoFence™ 19
 S-5! X-Gard™ 20
 S-5! X-Gard™ 1.0 Bracket 21
 S-5! X-Gard™ 2.0 Bracket 21
 S-5! X-Gard™ NEX® Pipe and NEX® Splice 21
 S-5! X-Clip II 21
 S-5! X-Clip III 21
 S-5! X-Gard™ NEX® Endcap 21

S-5!® Clamps

S-5-U and S-5-U MINI 22
 S-5-S and S-5-S MINI 22
 S-5-E and S-5-E MINI 23
 S-5-H90 and S-5-H90 MINI 23
 S-5-T and S-5-T MINI 23
 S-5-V and S-5-V MINI 23
 S-5-N and S-5-N MINI 24
 S-5-N 1.5 and S-5-N 1.5 MINI 24
 S-5-Z and S-5-Z MINI 24
 S-5-Q and S-5-Q MINI 24
 S-5-B and S-5-B MINI 25
 S-5-K Grip and S-5-K Grip MINI 25
 S-5-K Grip Snow 25
 S-5-H and S-5-H MINI 25
 S-5-KHD 26

S-5!® Brackets

12-14 x 1-1/2” ZAC Self Drill #3 (3/8 HWH) 26
 1/4-14 x 1-1/2” ZAC Type 17 AB Milled Point 26
 CorruBracket 100T 26
 CorruBracket 27
 VersaBracket-47 27
 VersaBracket-67 27
 ProteaBracket (solar) 27
 RibBracket I-IV™ 27
 Original RibBracket 27

S-5!® PVKit® 2.0

S-5! EdgeGrab™ 28
 S-5! MidGrab™ 28

DEKS

DekTite Original Round Base 30
 DekTite Round Base Colors 31
 DekTite High Pitch 31
 DekTite Silicone High Temp 32
 DekTite RetroFit Round Base 32
 DekTite Flashings 33

Sealants & Adhesives

MB-10A Butyl Tape	34
Geocel 2300 Clear	34
Sure-Bond SB-190 High Strength Adhesive Caulk.....	46

LCF Fasteners, Foam & Rivets

LCF Painted Stainless Steel 43 Pop Rivet.....	35
LCF Pro ClipLok	36
LCF T17 Wood-X.....	37
LCF SC110Vent	37

BiegetecAT Roll Benders & Hem Rollers

Bender S-60	38
Bender S-100	38
Bender S-150	38
Bender XL-150	38
Bender XL-250	38
Roller S Model.....	38
Roler XL Model.....	38
Pocket Bender 20/50	38

BiegetecAT Double Seamer & Eaves Closer

Double Seamer PVC	39
Eave Closer PVC	39

Jetco Products

Wachtel Panel Cutter - Tool Only.....	40
Wachtel Panel Cutter - Battery & Charger	40

WUKO® Benders - Cutters - Seamers

WUKO HEM Bender 8200	42
WUKO Disc-O-Bender 4000	42
WUKO Duo Bender 3200.....	42
WUKO Disc-O-Bender Twist 4040	42
WUKO Bender Set 2050/4040.....	42
WUKO Bender Set 3200/4000.....	42
WUKO Disc-O-Bender 6200	43
WUKO MINI Bender 2020.....	43
WUKO Bender Anniversary Set 2050/2204/4040.....	43
Other WUKO Tools	43

ESE Machines Seamers & Decoilers

ESE001C.....	44
ESE099	44
ESE Standard Decoiler	44
ESEDECMINI.....	44

Malco Hand Tools

Malco S3R Hand Seamer with Forged Steel Jaws.....	45
Malco S6R Hand Seamer with Forged Steel Jaws.....	45
Malco DEFT Folding Tool.....	45
Malco TSHD Offset Crimper	45

Tekton Tools

Tekton Torque Wrench	42
----------------------------	----

KETT Tools

KD-400	46
KD-446	46
KETT #102.....	46

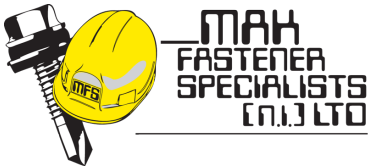
Berger™ Snow Retention

RT Snow Guard Series	47
AP Snow Guard Series.....	48
SL-1 Snow Meister Series	48
SG-1 Snow Meister Series	48
Pro 100 Snow Guard Assembly Heavy Duty	49
No. 100 Snow Guard Assembly.....	49
Modified No. 100 Snow Guard Assembly	49
Sure-Bond SB-190 High Strength Adhesive Caulk.....	50

Terms & Conditions

Return Policy - Metal Plus Roofing Brackets.....	51
Return Policy - Other Products	51
Return Policy - Distributors	51

WE ARE ALWAYS LOOKING FOR NEW, REPUTABLE INTERNATIONAL DISTRIBUTORS. IF YOU ARE INTERESTED, PLEASE CONTACT US.



**MAK
FASTENER
SPECIALISTS
(N.I.) LTD**

IRELAND

Unit A, South City Business Park
Tallaght, Dublin 24
Tel: +353 (0)1 451-9900
Sales Fax: +353 (0)1 451-9004
Admin Fax: +353 (0)1 462-4019
sales@makfasteners.com
<http://www.makfasteners.com/>



CANADA

2 Chisholm Court
Ajax, Ontario. L1S-4N8
Phone: 647-932-5605
TF: 855-888-6869
Fax: 905-686-7146
<http://www.skyproducts.ca>



CANADA

ATBEST Inc
1 - 3521 78 Ave SE
Calgary, AB T2C 1J7
(403) 225-2378
info@atbest.ca
info@s-5.ca



NEW ZEALAND
FRIBESCO.CO.NZ

Fribesco Ltd | 46 Vickerman St.
Port Nelson 7010 | New Zealand
Phone NZ: +64 9 622 0107
Email: info@fribesco.com
www.fribesco.co.nz



AUSTRALIA
FRIBESCO.CO.AU

Fribesco Ltd | 59 Naxos Way
Keysborough | Melbourne
Phone AUS: +61 8 8120 3208
Email: info@fribesco.com
www.fribesco.com.au

ABOUT METAL PLUS LLC

BRACKETS – The Ultimate Bracket, The Big Boys, and The Roofer's Helper – began with a metal roofing contractor who realized that his work time was inefficient.

After an exhaustive search of the internet and metal roofing magazines, he discovered there was no bracket designed strictly for Standing Seam Metal Roofing, specifically one that would enable the contractor to install metal roofing in a comfortable, efficient and safe manner. This is how the idea was born to invent and develop his own. This process took several years to invent, develop, patent and manufacture. The outcome has been well worth the wait.

We now offer three brackets: The Ultimate Bracket, The Big Boys and The Roofer's Helper. We have no doubt that once your company uses these brackets, you will find that the installation of Standing Seam Metal Roofing has never been so fast, efficient and comfortable. All you will have to do is sit back and enjoy the sounds of happy employees and watch your profit margins grow!

We accept Visa,
MasterCard and American Express.
Prices subject to change without notice.
Call for updated pricing.



METAL PLUS LLC

214 Wallens Hill Road, Winsted, CT 06098

Phone: 860-379-1327 • Fax: 860-379-6016

Sales@metalplusllc.com • Web: metalplusllc.com

Office hours: 8:00 am – 4:30 pm. Monday – Friday

We are closed major holidays.



THE WORLD'S BEST STANDING SEAM METAL ROOFING BRACKETS!

METAL PLUS BRACKETS IMPROVE YOUR PROFIT MARGIN

HOW METAL PLUS BRACKETS CAN IMPROVE YOUR PROFIT MARGIN

The industry has recognized Metal Plus LLC's roof bracket as a vital piece of equipment for the installation of metal roofing and solar arrays. Because of the importance of standing seam metal roofing, solar arrays and their attachments in determining cost efficiency and longevity, it is imperative to calculate time cost into various projects. Since a company's biggest expense is labor costs, not tools and equipment, unforeseen labor costs can severely impact a company's profit margin. By utilizing Metal Plus, LLC's brackets to speed up a project, a company can experience a 15% to 25% profit increase depending on the scope of the project.

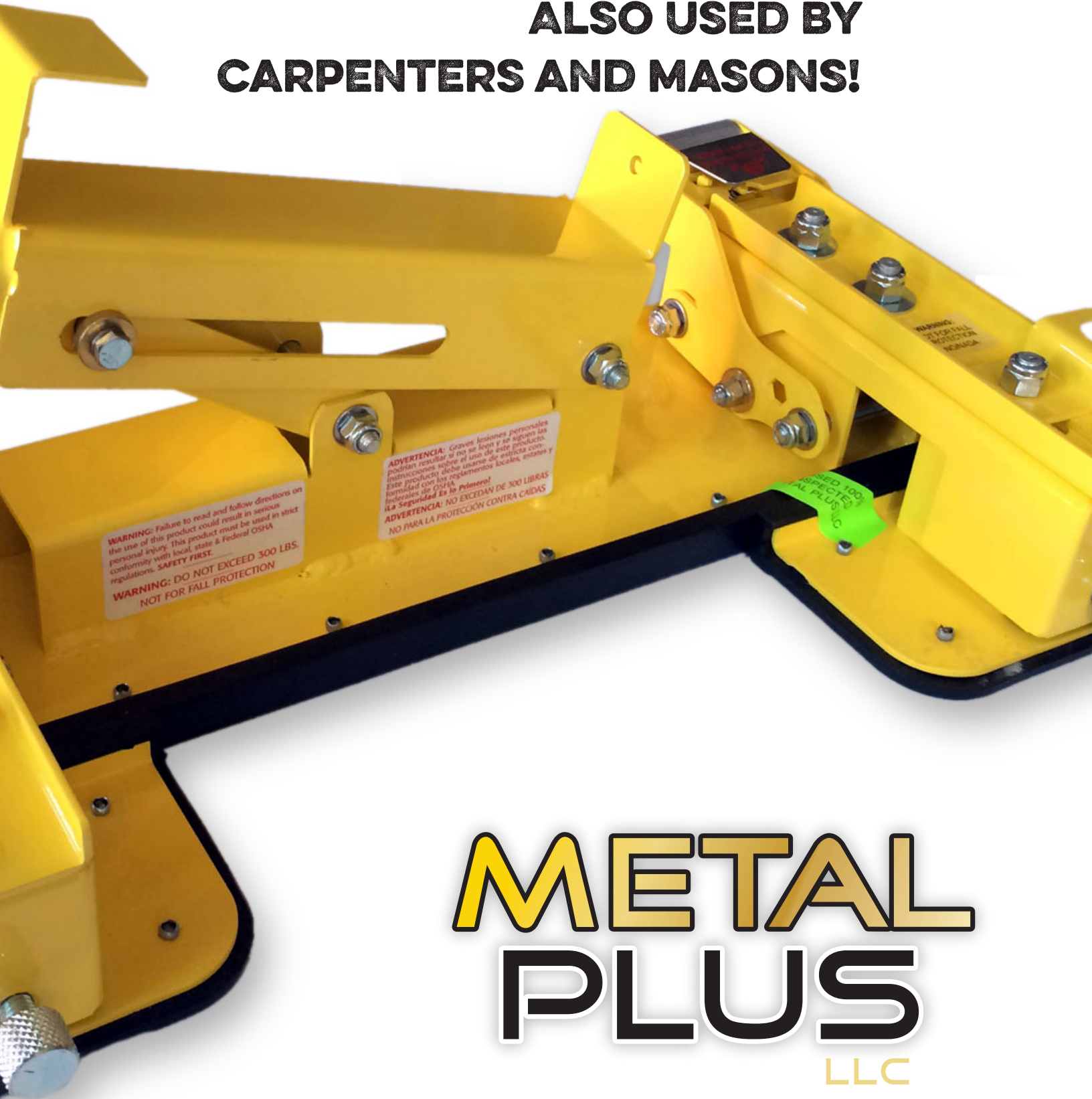
OUR BRACKETS ACT LIKE AN ADDITIONAL SET OF HANDS TO MAKE SOLAR PANEL INSTALLATION QUICKER AND EASIER BY HOLDING PANELS IN PLACE.

Metal Plus, LLC's product line of brackets easily clamp onto the standing seam roof without damage to the panel or paint. The brackets also create a comfortable, safe and more efficient work area for the employee. Employees will now have a staging area to rest roofing accessories and solar modules. For the company, this translates into a higher profit margin, a safer work environment, and less fatigued and happier employees.



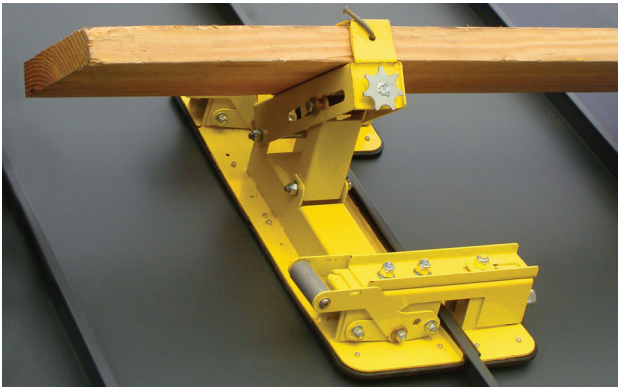
**DESIGNED FOR METAL
ROOFERS AND SOLAR INSTALLERS!**

**ALSO USED BY
CARPENTERS AND MASONS!**



**METAL
PLUS
LLC**

THE ULTIMATE BRACKET



- Designed for 2" x 8" and 2" x 10" wooden planks
- Adjusts from a 3/12 to a 24/12 slope
- A double-start crankshaft system allows you to adjust the tool one degree at a time
- High-grade powder coating prevents corrosion
- Custom designed rubber pads on the base and sides of the tool prevent roof damage
- Installs from a 1" up to a 2" Snap-Lock or mechanical standing seam metal roof
- Easy one hand installation and removal
- **Rated for 300 lbs. wet or dry**
- Walking platform can be kept level at all times, which follows Osha requirements

\$1,389 per bracket

THE BIG BOYS



- Designed strictly for a 12" aluminum plank
- Used by solar installers, carpenters and masons for a more comfortable, long-lasting stationary workplace
- Adjusts from a 3/12 to a 24/12 slope
- A double-start crankshaft system allows you to adjust the tool one degree at a time
- High-grade powder coating prevents corrosion
- Custom designed rubber pads prevents roof damage
- Installs from a 1" up to a 2" Snap-Lock or mechanical standing seam metal roof
- Once the aluminum plank is installed, it automatically locks itself in place
- Easy one hand installation and removal
- **Rated for 300 lbs. wet or dry**
- Walking platform can be kept level at all times, which follows Osha requirements

\$1,399 per bracket

THE WORLD'S BEST STANDING SEAM METAL ROOFING BRACKETS!

THE ROOFER'S HELPER



- Designed to hold solar panels, skylights and chicken ladders in place on the roof
- Enables tie down of a ladder on the bottom or side of the roof
- Fits in tight places where planks do not work
- Can be used by any trade that performs work on a standing seam metal roof
- Can be used as a ladder
- Two clamping systems
- Adjustable bar for various widths of standing seams
- High-grade powder coating prevents corrosion
- Custom designed rubber pads on the base of the tool prevent roof damage
- Installs from a 1" up to a 2" Snap-Lock or mechanical standing seam metal roof

\$1,329 per bracket

PACKAGE STARTER KIT



To give you the tools you need to secure and simplify your roofing project, our starter kit comes with eight Roofing Brackets in any combination you choose! Customize your kit by choosing from our Ultimate Brackets, Big Boys and Roofer's Helpers.

Any combination of 8 or more brackets are \$1,209

Kit - \$9,752

MINI STARTER KIT

Have a smaller business? Try our Mini Start Kit with any combination of 4 Brackets! Any combination of 4 or more brackets are \$1,289

Mini Kit - \$5,156



ALL OF OUR BRACKETS ARE MADE IN THE USA!



THE WORLD'S BEST STANDING SEAM METAL ROOFING BRACKETS!



Mario Lallier, LLC employees have installed all three types of Metal Plus, LLC roofing brackets and the necessary staging. These three roofing brackets—The Ultimate Bracket, The Big Boys, and The Roofer's Helper—were specifically designed for standing seam metal roofs.

The Litchfield Hills Solar Company will use these brackets to tie in all the necessary solar wiring into the standing seam metal roof, creating an integrated system.



Afterwards, the metal roofing company will return to the roof and install the ridge cap before the brackets are dismantled and removed. This process goes smoothly and efficiently, due to the brackets' one-handed, quick-release design.

PLEASE VIEW OUR VIDEOS ON OUR WEBSITE!

Try Our New Online Store Today!

Metal Plus Catalog Products Available Online Now!



METAL PLUS

METAL ROOFING TOOLS AND ACCESSORIES **LLC**



ALL OF OUR BRACKETS
ARE MADE IN THE USA!

860-379-1327 METALPLUSLLC.COM

A BETTER ANCHOR POINT! UNIVERSAL SAFETY ANCHOR



Metal Plus Universal Safety Anchor (USA) has also done very well in our neighboring country. This photo is from ALL...THE BEST Inc. doing a project in Alberta Canada. The company quoted; **“The synergy between the Universal Safety Anchor, and the Roofing Brackets, has made our job a safe and efficient workplace.”**

For Standing Seam Metal Roofs!

Are you dissatisfied with the anchor points currently on the market, which cause serious damage to the standing seam panels with their primitive and cumbersome design? Some gouge the panels, and others are limited to a few panel profiles! We’ve revolutionized the industry of anchor points, with our well-designed and engineered Universal Safety Anchor!

**DESIGNED FOR
METAL ROOFERS,
SOLAR INSTALLERS,
CARPENTERS AND MASONS!**

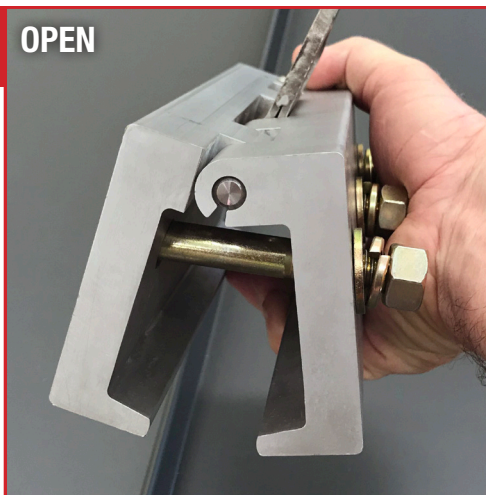




the Metal Plus Universal Safety Anchor
 Universal Safety Anchor as well as our full product line
 of Standing Seam Metal Roofing Brackets are all
 Made in the U.S.A.!

- **NO MORE** adjusting set screws!
- **NO MORE** replacing parts!
- **NO MORE** set screws gouging and damaging panels!
- **NO MORE** voiding manufacturers warranty on panels!
- **NO MORE** rusting of panels when anchor points are removed!
- **NO MORE** complaining customers of excessive damage to panels!
- **NO MORE** dismantling of anchor point required!

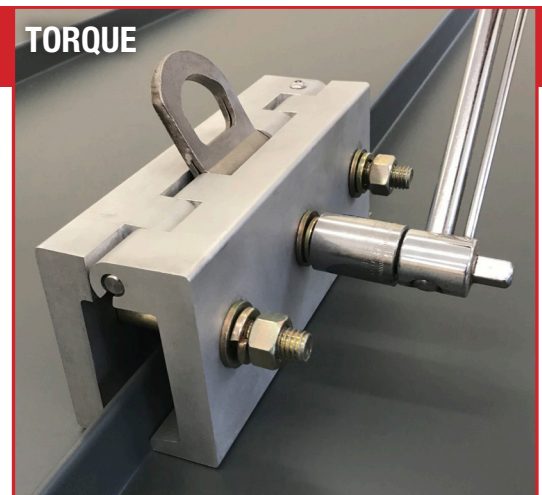
OPEN • CLOSE • TORQUE • IT TAKES LESS THAN A MINUTE TO INSTALL!



OPEN



CLOSE



TORQUE

Testing:
 OSHA 1910.140
 ANSI/ASSE Z359.18

1-5 - \$219 ea. • 6+ - \$199 ea.
Price Breaks for Bulk Ordering!

**ALL OF OUR
 BRACKETS AND ANCHORS
 ARE MADE IN THE USA!**



PLEASE WATCH OUR PRODUCT REVIEW: WWW.METALPLUSLLC.COM/A/ANCHOR-POINT

THE MYTH OF THE 5000 LB. ANCHOR POINT (DOES IT EXIST IN 2019?)

CHOOSING THE RIGHT ANCHOR POINT CAN BE DIFFICULT.

The main criteria most people look for when shopping for an anchor point is that it will withstand a 5000 lbs. load.

Though that is the main selling feature on some anchor points, there are times when your attachment may fail before 5000 lbs. What good is an anchor point that can hold 5000 lbs when it will shear off your wall or building far before reaching its capacity?

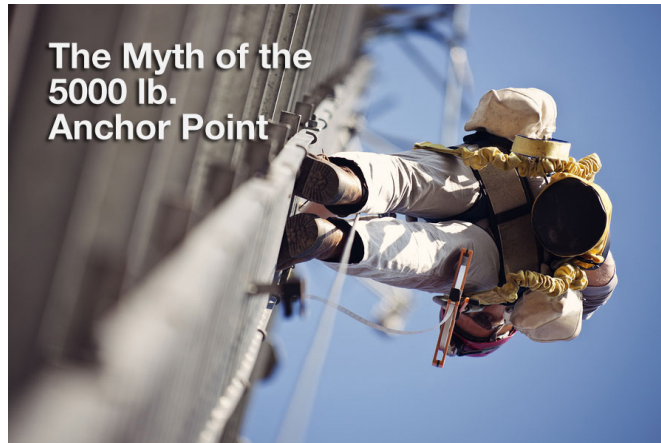
A 5000 LBS. ANCHOR POINT MAY NOT BE REQUIRED ACCORDING TO OSHA.

By misinterpreting the OSHA ruling on anchor points, you are significantly limiting yourself in areas that are already lacking options. Let's clear up what OSHA says about the load requirements of anchor points.

WHY DO WE BELIEVE THIS 5000 LBS RULE?

For starters, OSHA 1926.502(d)(15) says "Anchorages used for attachment of personal fall arrest equipment shall be ... capable of supporting at least 5,000 pounds (22.2 kN) per employee attached..."

This is certainly the simplest method of ensuring compliance. However, stopping here does not allow specific fall hazards to be addressed due to a lack of structural integrity.



What most people miss at the end of this is clause is the "or." Continuing on, OSHA says, "or shall be designed, installed, and used as follows: as part of a complete personal fall arrest system which maintains a safety factor of at least two;" The next code, 1926.502(d)(16), speaks of these personal fall arrest systems.

Jumping down to 1926.502(d)(16)(v), speaking of personal fall arrest systems (ie, anchor points, lifelines, etc.), OSHA states the anchorage must, "...have sufficient strength to withstand twice the potential impact energy of an employee free falling a distance of 6 feet (1.8 m), or the free fall distance permitted by the system, whichever is less."

There seems to be various theories as to why OSHA settled on 5000 lbs. In fact, when testing systems, you are required to use a weight of 220 lbs. (plus or minus 3 lbs.) at a freefall of 6' [29 CFR 1926 Subpart M Appendix C].

The system would fail the force test if it recorded greater than 2520 lbs. of force during this test. If the system passes, a safety factor of two applied to 2520 lbs. would be approximately 5000 lbs. However, 5000 lbs. is where many people stop reading.

WHY DOES THIS MATTER?

It matters because the forces incurred during a fall of a 220 lb. worker who is utilizing a fall arrest system could be approximately 900 lbs., not 2500 lbs. Reason being that fall arrest systems have some type of deceleration device that engages after freefall and reduces the force.

If we look at the “or” clause in the standard and apply the safety factor of two, it means that in this scenario our anchor point only has to support 1800 lbs. of force. That’s a huge difference from 5000 lbs.

In reality, there may be many fixtures in your work area that don’t meet the 5000 lb. requirement but satisfy the 1800 lb. requirement - a roof truss, for example. By eliminating all potential anchorage points that do not meet 5000 lbs., we may be making a difficult situation unnecessarily more difficult.

There is a flip-side, though. Consider the example: approximately 2500 lbs. of force is incurred when a worker weighing 220 lbs. freefalls 6’. In this day and age, many workers, with or without tools, weigh more than 220 lbs.

WHAT FORCE DOES SOMEONE OVER 220 LBS EXERT ON THE SYSTEM IN A FALL?

Regardless of what it may be, we can assume it’s MORE than 2500 lbs. Therefore, the 5000 lb. rule would seem NOT to support anybody over 220 lbs.

In a note under 1926.502(d)(16)(v), OSHA addresses this and states that your system will be deemed to be in compliance if the worker’s combined tool and body weight is less than 310 lbs.

Any combined weight 310 lbs. or more would require a modification to the system to ensure it accommodated the extra weight.

Now, this doesn’t mean we can go tying-off to things all haphazardly. Whether reducing the capability requirement of an anchor point for use with a fall arrest system or increasing it due to a heavy worker, it is vital that you don’t guess at capacities and imposed forces.

Documentation is the key. Rather than make assumptions, check the manufacturer’s paperwork to see what the numbers actually are. If that doesn’t give you the answers you need, have a PE perform the necessary calculations to determine if what you plan on doing is sufficient.

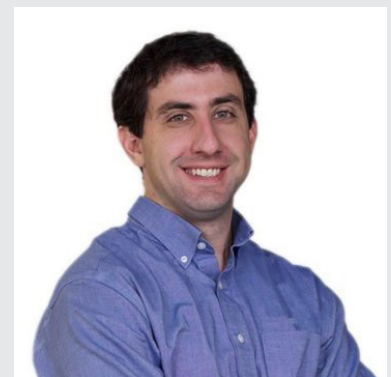
Keep in mind, you can always choose to keep it simple and stick with the 5000 lb. requirement for your personnel and subcontractors (though you would still need to make adjustments for any combined weights 310 lbs. and above). You can also choose to go above and beyond what OSHA requires.

In this case, going above and beyond could reduce the chance that something is done incorrectly. Following the regulation as written, though potentially more complex, could open up new, perfectly safe solutions that were never before an option.



About the author

Josh Borowiec is a Safety Professional with OSHA training and years of Fall Protection experience. He has a background in sales and consults on workplace hazards, performs risk assessments, and provides safe and compliant solutions specific to his customer needs. In his spare time, he writes for multiple blogs and loves taking photos.



<https://simplifiedsafety.com/blog/the-myth-of-the-5000-lb-anchor-point/>



ColorGard®

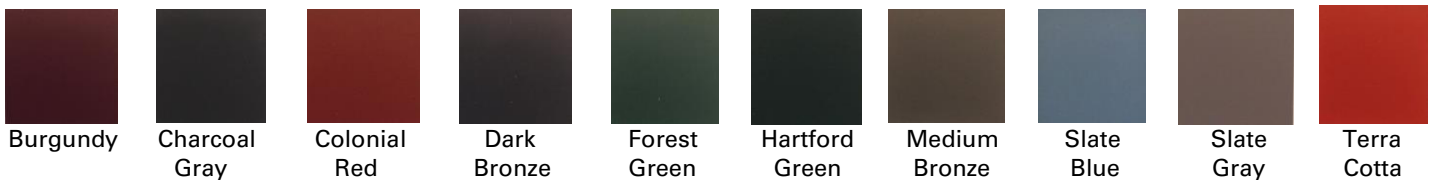
ColorGard® is the most reliable snow retention system on the market, and we have the warranty to prove it! In addition to the free 25-year warranty on parts, ColorGard is the only system that offers an optional limited ColorGard System Warranty* against system failure. ColorGard maintains unsurpassed holding strength and a lower installed cost than any other engineered system on the market. Unlike other snow retention systems, ColorGard utilizes a strip of the actual roof material to ensure perfect color match for the life of the roof.*

* To see optional limited ColorGard System Warranty information, check out our ColorGard Calculator, view load test results, and more at www.S-5.com.

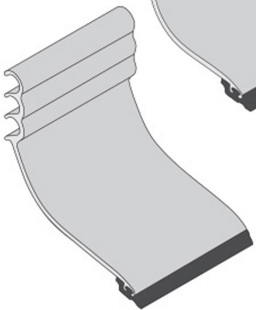
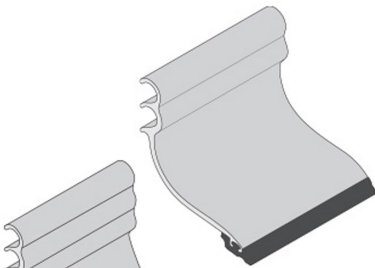
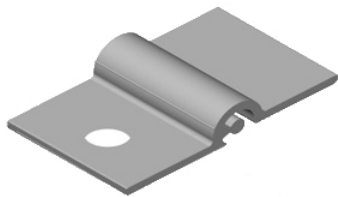
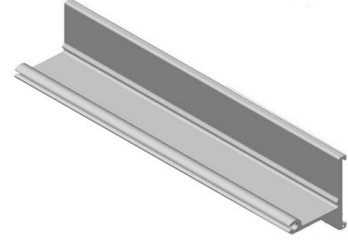
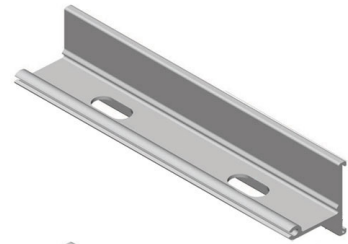


Metal Plus LLC offers a variety of color strips that smoothly slide into your Colorgard cross-members. Colorgard is designed to work with a strip of roofing material. The color strips are a 2" wide x 99" long 24 gage Galvalume. We stock most colors below.

Please note that colors are approximate and may deviate slightly.



Product	1-11	12-36	37+
Color Strips	\$12.89	\$10.95	\$10.21



Product	PCs/BOX	1 - 11	12 - 47	48+
Punched Crossmember	12	\$24.95	\$24.59	\$23.79

Punched ColorGard® is slotted every 4" (10.2 cm) on center for seams that are spaced accordingly, i.e. divisible by 4" (10.2cm). The slotted configuration works well with S-5!® clamps. 7' 8" Long

Product	PCs/BOX	1 - 11	12 - 47	48+
Unpunched Crossmember*	12	\$22.95	\$22.49	\$21.75

Unpunched ColorGard® is the most versatile and easy to install, when used with the S-5!® VersaClip™. Unpunched does not need holes, as the VersaClip™ accommodates any seam spacing. The unpunched configuration works well with VersaBracket™. Unpunched is the right choice when the roof is laid out with untrue seam width or when the seam width is not divisible by 4. If in doubt, use unpunched. 7' 8" Long

***Must purchase VersaClips for the clamps to attach to un-punched Colorgard**

Product	PCs/BOX	1 - 99	100-399	400+
VersaClip	100	\$1.49	\$1.35	\$1.25

Available for purchase separately, VersaClip™ makes installation easy, as it simply slides on the ColorGard® crossmember. It can be used with all S-5!® clamps (one per clamp), and is optional with CorruBracket™. VersaClip™ is not needed with VersaBracket™. VersaClip™ is also handy when installing ColorGard® askew, such as is required in the valleys between intersecting rooflines.

Product	PCs/BOX	1 - 54	55 - 164	165+
SnoClip II	55	\$2.39	\$2.25	\$2.19

SnoClip II™ is an aluminum add-on that helps retard the migration of snow and ice beneath the ColorGard®. Required on 2" or higher seams. Fits 1" to 1 3/4" seams. **See Chart Below!**

Product	PCs/BOX	1 - 34	35 - 104	105+
SnoClip III	35	\$2.99	\$2.82	\$2.74

SnoClip III™ is an aluminum add-on that helps retard the migration of snow and ice beneath the ColorGard®. Required on 2" or higher seams. Fits 1 3/4" to 3" seams. **See Chart Below!**

Product	PCs/BOX	1 - 54	55 - 164	165+
SnapClip II	55	\$4.29	\$3.69	\$3.49

Performs the same function as SnoClip, but has two additional features. SnapClip may be retrofitted later to an existing assembly. It also screw-fastens to the crossmember, preventing it's lateral migration. Available in two sizes to accommodate various seam height dimensions. **See Chart Below!**

Product	PCs/BOX	1 - 34	35 - 104	105+
SnapClip III	35	\$4.05	\$3.89	\$3.79

Performs the same function as SnoClip, but has two additional features. SnapClip may be retrofitted later to an existing assembly. It also screw-fastens to the crossmember, preventing it's lateral migration. Available in two sizes to accommodate various seam height dimensions. **See Chart Below!**

SnoClip/SnapClip II	
Designed for Seam Heights of 1" to 1-1/2"	
Lock 1	1-3/8" - 1-1/2"
Lock 2	1" - 1-3/8"
Lock 3	N/A

SnoClip/SnapClip III	
Designed for Seam Heights of 1-1/2" to 3-1/4"	
Lock 1	2-7/8" - 3-1/4"
Lock 2	2-1/2" - 2-7/8"
Lock 3	1-1/2" - 2-1/2"



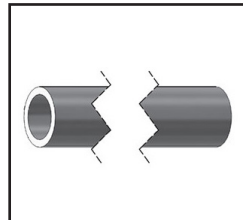
DualGuard™ DualGuard™ is a complete, 2-pipe snow retention system created for those who prefer a pipe-style snow retention system with the strength, testing, quality and time-proven integrity you expect from S-5! DualGuard can also be color-finished to match the roof. The system utilizes two anchor points per bracket, and can be engineered for structural adequacy online with our new DualGuard Calculator and backed by independent lab testing. DualGuard is the most versatile and reliable pipe system on the market. And in the S-5! tradition—also the lowest cost.



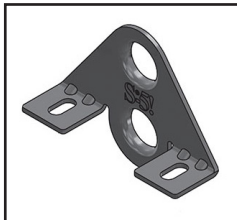
DualGuard™
a complete system including:

- DualPipe™ (1" diameter)
7' 8" Long
- DualGuard Splice (comes with pipe)
- DualBracket™
- DualClip II™
- DualClip III™
- DualGuard Endcaps
- DualCollar™

* Must be used with S-5 mini clamps
* Mini clamps do not come with M8 bolt.
* Will need M8 bolts for installation



DualPipe™
7' 8" Long



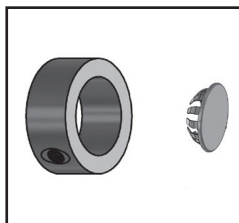
DualBracket™



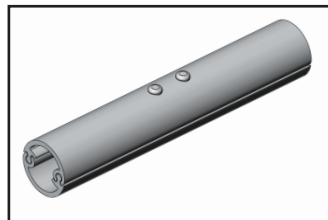
DualClip II™
Seam Height 1" - 1 1/2"



DualClip III™
Seam Height 1 3/4" - 3 1/4"



DualCollar™ Endcap



DualPipe™ Splice

DualGuard™
Advantages:

- DualGuard Brackets work with a range of clamps and offer lateral system stability.
- DualClip easily mounts to the pipes for increased snow and ice retention.
- DualGuard is compatible in metallurgy with all common metal roofing (except copper).
- DualGuard can be installed any time of the year.

DualPipe™		DualBracket™	
1 - 15	\$22.95	1 - 53	\$4.59
16 - 67	\$22.59	54 - 161	\$4.35
68+	\$21.99	162+	\$4.19

DualClip II™		DualClip III™	
1 - 34	\$4.69	1 - 24	\$5.69
35 - 104	\$4.45	25 - 74	\$5.49
105+	\$4.39	75+	\$5.35

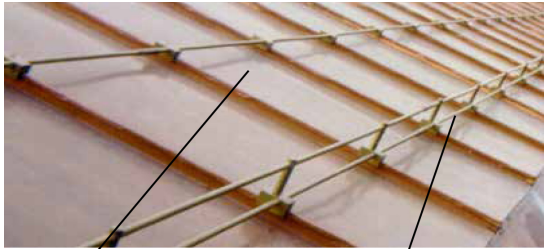
DualCollar™ and Endcap (packs of 4)	
1 pack of four	\$18.89



S-5![®]

The Right Way!

Whether aluminum or brass, our SnoRail™ and SnoFence™ systems offer a sleek, stylish design. Utilizing patented S-5![®] clamp technology, this snow retention system doesn't pierce the metal roofing, thereby protecting roof coatings and weather-tightness warranties.



SnoRail™ and SnoFence™

SnoRail™

One SnoRod™* is inserted through the S-5-A SF or S-5-B SF clamps, positioning it just above the panel seams. The resulting assembly is called SnoRail. SnoRod is available in brass and stainless steel.

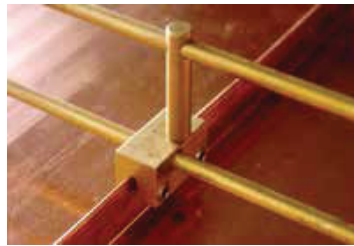
SnoFence™

With an assembled SnoRail System, simply thread one SnoPost™ into the S-5-A SF or S-5-B SF clamp, and then add a second SnoRod two inches above the first. The resulting double-rod assembly is called SnoFence. SnoPost is available in brass and stainless steel.

The SnoRail™ and SnoFence™ system is available in brass for use on copper batten or standing seam roofs and in aluminum for other standing seam roofing materials.



SnoFence – Brass on copper batten seam



SnoFence – Brass on copper standing seam



SnoRail – Aluminum



SnoFence – Aluminum

BRASS COMPONENTS

Product	1-69	70-139	140+
S-5-B-SF	\$24.29	\$23.09	\$21.69
S-5-BE	\$27.79	\$26.19	\$24.69
Product	1-49	50-149	150+
SnoPost Brass	\$9.69	\$9.09	\$8.49
SnoPost BE	\$11.19	\$10.95	\$10.49
S-5-B Coupling	\$5.89	\$5.65	\$4.99
94" Brass 3/8" rod	\$43.95	\$41.75	\$39.29

ALUMINUM COMPONENTS

Product	1-49	50-249	250+
S-5-A SF	\$9.59	\$8.99	\$8.49
S-5-AE	\$10.95	\$9.89	\$9.59
Product	1-49	50-249	250+
SnoPost-SS	\$6.99	\$6.89	\$6.24
SnoPost E	\$7.44	\$7.00	\$6.65
S-5-A Coupling	\$1.19	\$1.19	\$1.19
94" Stainless Steel 3/8" Rod	\$24.89	\$23.49	\$22.89

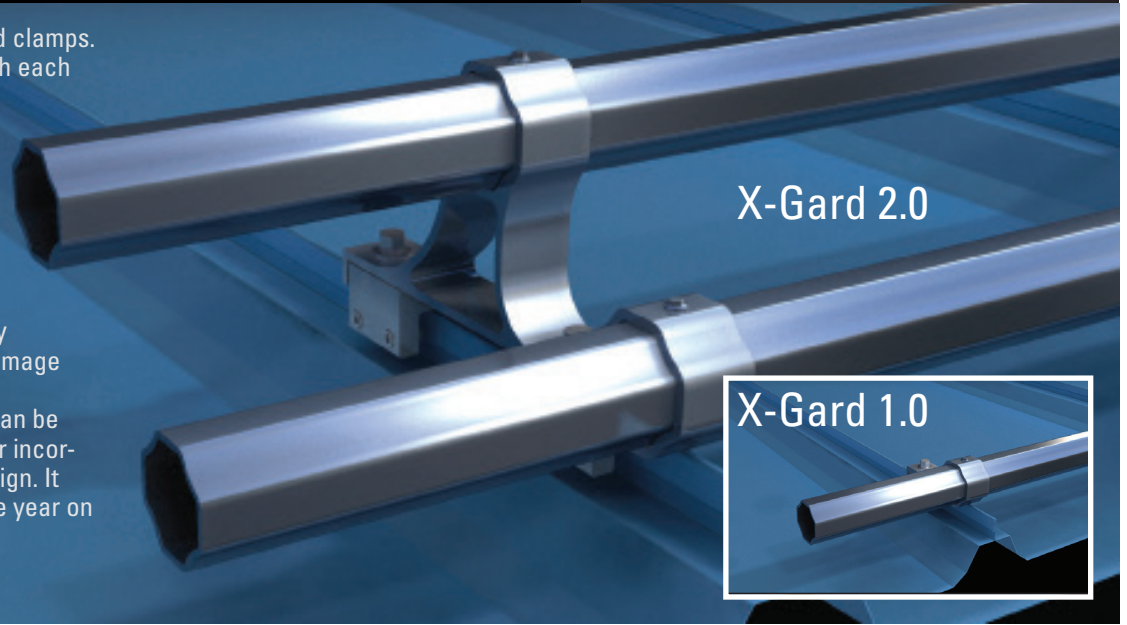
THE SNORAIL AND SNOFENCE HAVE MANY COMPONENTS, PLEASE CALL US AND WE WOULD BE HAPPY TO HELP

S-5![®]
The Right Way!

X-Gard™

When snow accumulations begin to melt, the result can be catastrophic as the blanket of snow avalanches off the roof, dumping tons of snow onto anything in its path, damaging landscape, gutters, adjacent roofs, vehicles, and causing injury or even death to passers-by. | X-Gard is the newest snow retention solution from S-5![®] and can be designed as a one- or two-pipe system spanning up to 48". No other pipe snow retention system on the market has proven stronger than X-Gard. The innovative double-clamp design allows X-Gard to provide unprecedented holding strength

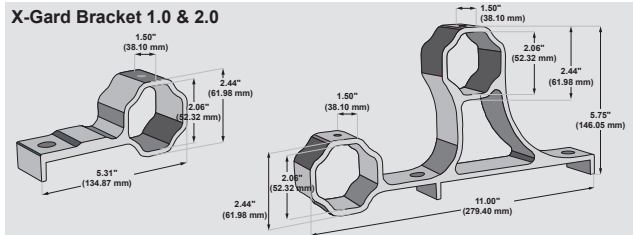
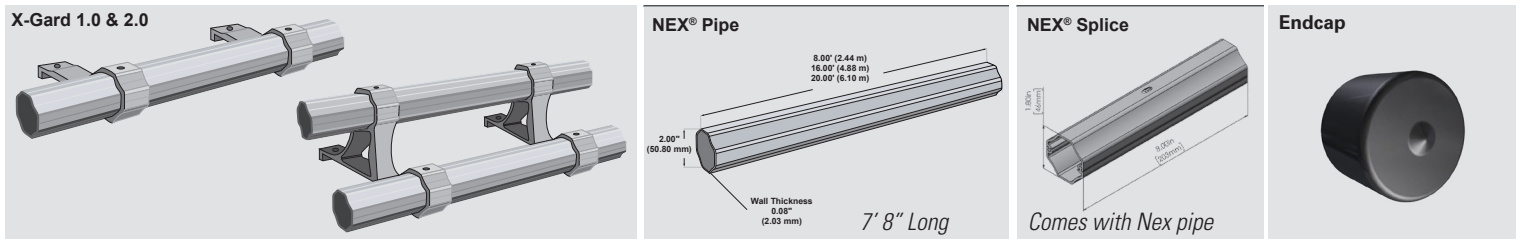
when attached with S-5!'s standard clamps. The employment of two clamps with each bracket and the unique shape of the NEX[®] 2.0 pipe enables a properly installed X-Gard system to provide a reliable snow retention solution in a wide variety of situations. X-Gard is mechanically attached with patented round-point set-screws, gripping the seam securely without penetration and without damage to the panel's protective finishes. This new snow retention solution can be easily retrofitted to existing roofs or incorporated into new construction design. It can be installed any time during the year on almost any metal roof profile.



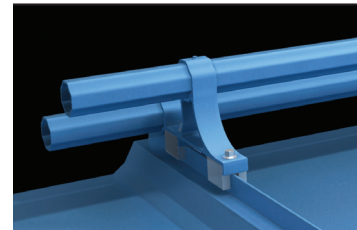
X-Gard Offers Versatility In Snow Retention

X-Gard can be purchased as a one- or two-pipe system, using standard S-5! clamps, depending on project specifics including pitch and snow load. The single- and double-pipe options can also be paired with a locally-purchased round pipe, or, for superior holding strength, X-Gard can be paired with the patented NEX[®] 2.0. *NEX[®] 2.0 is a product of Zilla[®].*

Components



X-Gard™ Finish Options

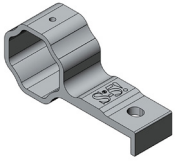


X-Gard snow retention system is designed to preserve the coveted aesthetics of the metal roof. Based upon project needs, X-Gard can be painted, powder coated, or anodized as chosen by the customer.

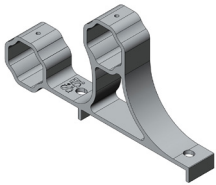
THE X-GARD™ HAS MANY COMPONENTS, PLEASE CALL US AND WE WILL DESIGN THE PROPER LAYOUT FOR YOUR ROOFING PROJECT.

S-5!® X-Gard Components

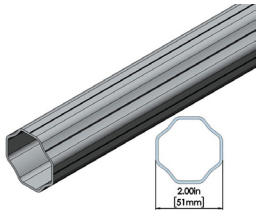
The Right Way!



Product	PCs/BOX	1 - 139	140 - 419	420+
X-Gard 1.0 Bracket	140	\$4.95	\$4.79	\$4.29
Octagonal-shaped bracket secures attachment of pipe to clamp.				



Product	PCs/BOX	1 - 31	32 - 127	128+
X-Gard 2.0 Bracket	32	\$10.45	\$9.79	\$9.45
Octagonal-shaped, one-piece bracket secures both pipe crossmembers to clamps.				



Product	PCs/BOX	1 - 10	11 - 43	44+
X-Gard NEX® Pipe	11	\$38.75	\$37.29	\$36.85
Unique, octagonal high-tensile aluminum crossmember spans up to 48". Installs in 7' 8" lengths.				



Product	PCs/BOX	1 - 79	80 - 319	320+
X-Clip II	80	\$5.65	\$5.39	\$5.19
Retards snow sliding under crossmember. Integrated rubber "foot" prevents abrasion of panel finish. Fits seam heights - 1" (25 mm) up to 1-3/4" (44.5 mm). Fits up to 2" (51 mm) vertical seams, but not 2" (51 mm) horizontal seams.				



Product	PCs/BOX	1 - 59	60 - 239	240+
X-Clip III	60	\$5.79	\$5.55	\$5.39
Retards snow sliding under crossmember. Integrated rubber "foot" prevents abrasion of panel finish. X-Clip III is designed for seam heights of 2" (51 mm) up to 3" (76 mm). Should not be used on 3" horizontal seams.				



Product	1+
X-Gard Endcap	\$1.69
Black vinyl endcap keeps rain, dirt or debris out of the pipes.	

SEE INDIVIDUAL PAGES TO SELECT THE BEST ATTACHMENT SOLUTION FOR YOUR METAL ROOF PROFILE.

S-5!®

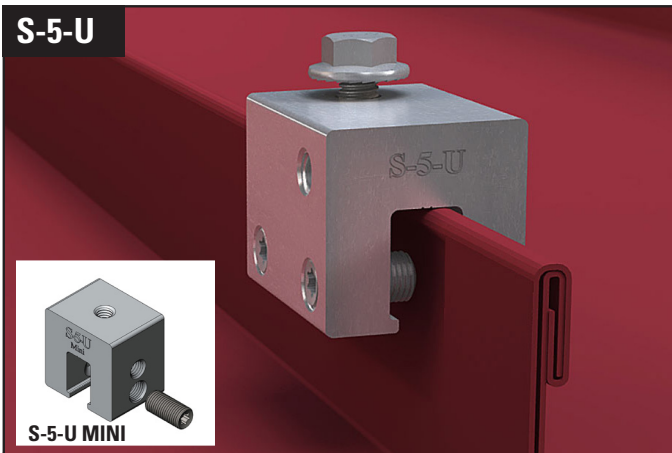
The Right Way!

Clamps

S-5!® clamps attach to the panel seam by the tightening of “bullet-nosed” stainless steel setscrews against the seam material. (This is usually done with an industrial grade screwgun.) The setscrews compress the seam material against the opposite wall of the clamp. They will “dimple” the seam material, but will not penetrate it. Threaded holes in the clamp (and stainless hardware provided) enable the easy attachment of various ancillary items to the clamps.



S-5-U

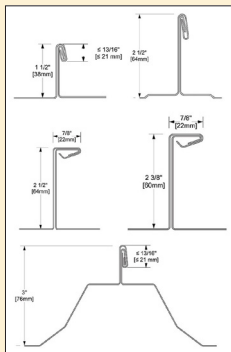


S-5-U MINI

The S-5-U clamp will fit about 85% of the standing seam profiles including most structural and architectural profiles. It can be used on vertically oriented seams, and by rotating the clamp 90 degrees, it can also be used on most horizontal 2" seam profiles.

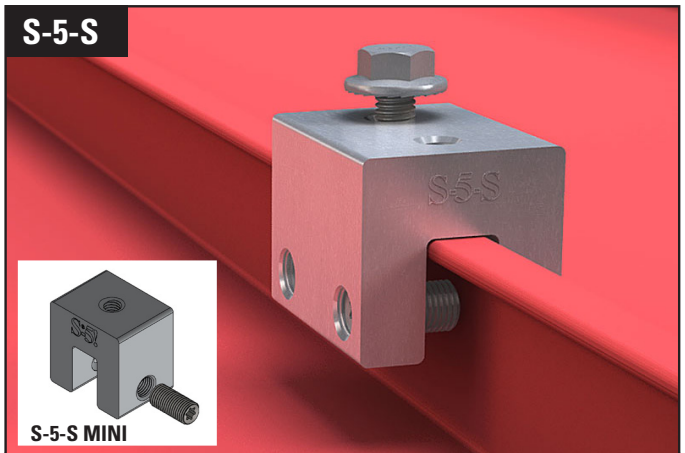
MINI - The S-5-U mini clamp will fit on most of the standing seam profiles including most structural and architectural profiles.

Bolt not included with Mini



S-5-U Mini PCS/BOX (50)		S-5-U PCS/BOX (30)	
1 - 49	\$4.89	1 - 29	\$6.79
50-199	\$4.75	30 - 119	\$6.59
200+	\$4.59	120+	\$6.45

S-5-S

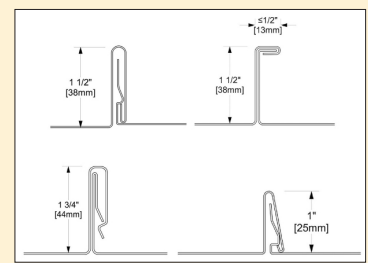


S-5-S MINI

The S-5-S clamps are extraordinarily versatile clamps, specifically created for popular snap-together standing seam profiles. The S-5-S or S-5-S Mini can be used to avoid having to crimp-seam profiles such as Firestone UC4 and New Tech Machinery SS550 and SS675.

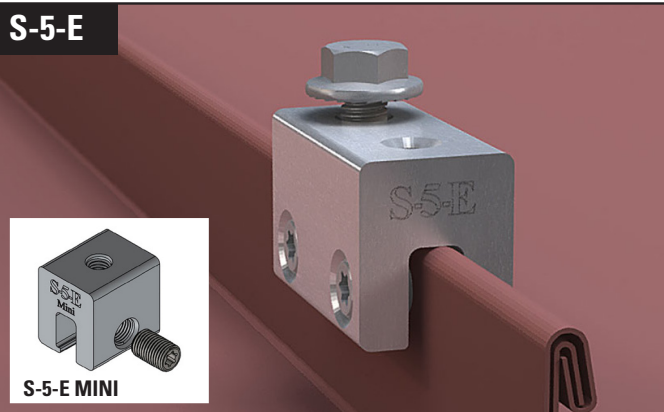
MINI - The S-5-S mini clamps were specifically created for popular snap-together standing seam profiles such as the Firestone UC4 and New Tech Machinery SS550 and SS675.

Bolt not included with Mini



S-5-S Mini PCS/BOX (50)		S-5-S PCS/BOX (30)	
1-49	\$3.69	1 - 29	\$5.39
50-199	\$3.49	30-119	\$5.19
200+	\$3.19	120+	\$5.09

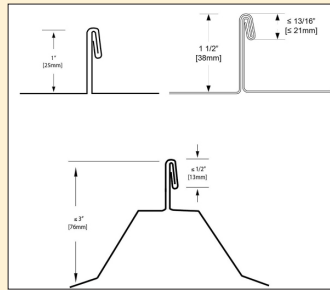
S-5-E



S-5-E MINI

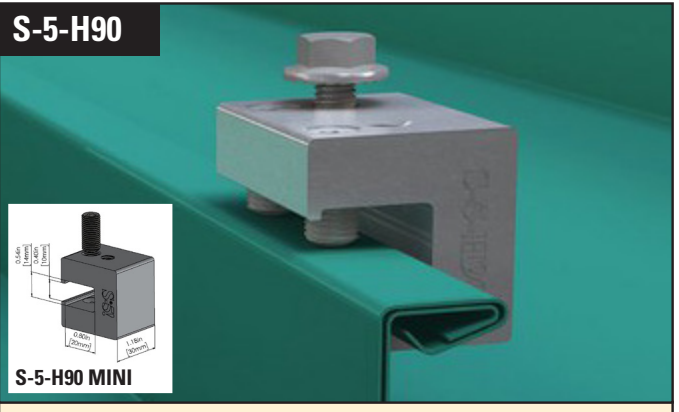
The S-5-E clamp is designed specially for double-folded standing seam roof profiles having the appropriate dimensioning. This clamp is also the one recommended for Butler's MR-24™.

MINI - For use on double folded seam, also fits Belter MR-24



S-5-E Mini PCS/BOX (90)		S-5-E PCS/BOX (50)	
1-89	\$3.49	1 - 49	\$4.49
90-359	\$3.39	50-199	\$4.29
360+	\$2.89	200+	\$3.99

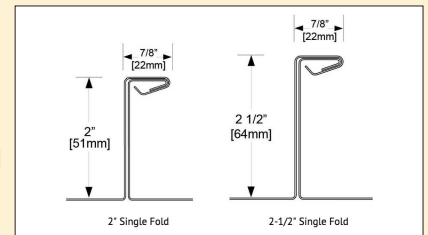
S-5-H90



S-5-H90 MINI

The S-5-H90 ("H" for Horizontal seam) is designed for standing seam panels with horizontal, single-folded seams. The H90 fits all standing seams that the S-5-U fits horizontally and fits fully seamed profiles the S-5-H fits vertically - but is more cost-effective than either.

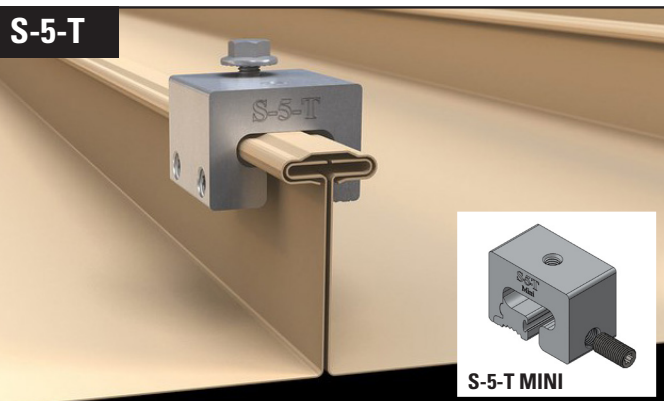
MINI - A more economical solution for lighter-duty attachments.



Bolt not included with Mini

S-5-H90 Mini PCS/BOX (50)		S-5-H90 PCS/BOX (30)	
1-49	\$3.79	1-29	\$5.52
50-199	\$3.59	30-119	\$5.49
200+	\$3.29	120+	\$5.39

S-5-T

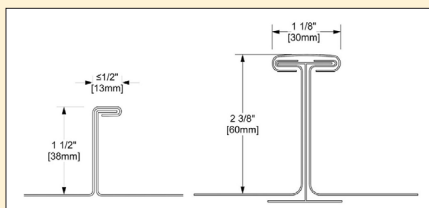


S-5-T MINI

The S-5-T clamp is specially developed to fit profiles having a "T" shaped seam configuration. It will also work on architectural "single-fold," or "angle-seam" profiles having a horizontal projection of 5/8" or less.

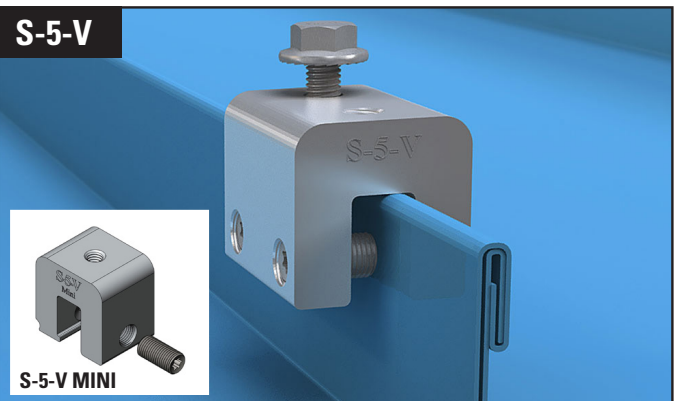
MINI - Fits profiles having a T-shaped seam.

Bolt not included with Mini



S-5-T Mini PCS/BOX (60)		S-5-T PCS/BOX (30)	
1-59	\$5.68	1-29	\$6.58
60-179	\$5.49	30-89	\$6.49
180+	\$5.39	90+	\$6.39

S-5-V

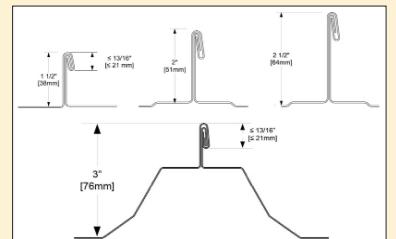


S-5-V MINI

The S-5-V clamp is a versatile clamp that fits vertical-folded seam profiles manufactured in North America — including most structural and architectural profiles.

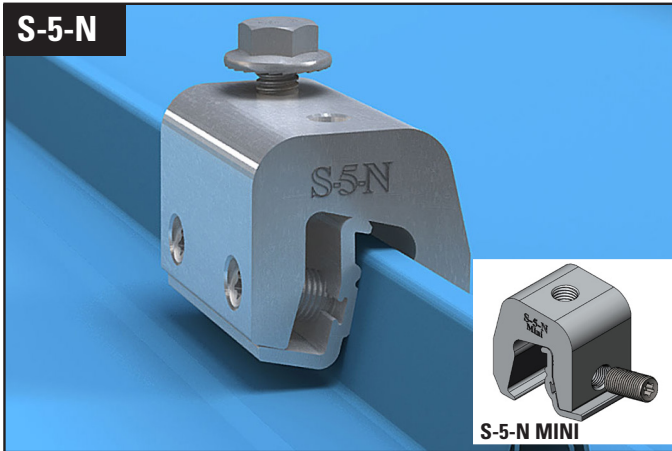
MINI - The mini is the choice for attaching all kinds of rooftop accessories: signs, walkways, satellite dishes, lightning protection systems and solar arrays. .

Bolt not included with Mini



S-5-V Mini PCS/BOX (50)		S-5-V PCS/BOX (30)	
1-49	\$3.79	1-29	\$5.29
50-199	\$3.69	30-119	\$5.19
200+	\$3.25	120+	\$5.09

S-5-N

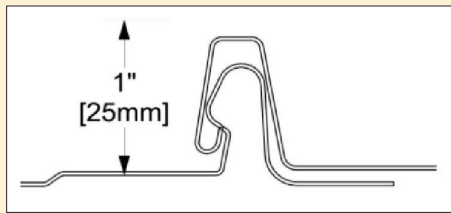


The clamp boasts a wider throat that accommodates most nail strip profiles, minimizing the need to field crimp. An angled wall with a nose permits the S-5-N to engage the triangle type profiles during the installation process. Fits 1" nailing strip profiles.

MINI - Fits 1" nailing strip profiles

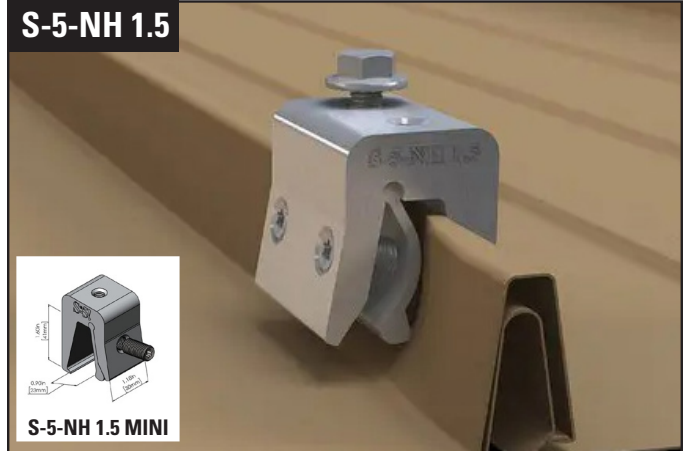
SEE S-5-NH 1.5, NEW Replacement for S-5-N 1.5

Bolt not included with Mini



S-5-N Mini PCS/BOX (50)		S-5-N PCS/BOX (30)	
1-49	\$4.69	1-29	\$5.39
50-199	\$4.59	30-119	\$5.25
200+	\$4.49	120+	\$5.19

S-5-NH 1.5

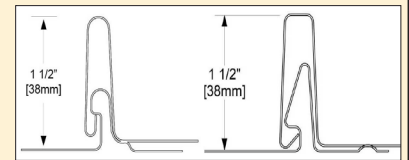


The S-5-N ("N" stands for nail strip) is a non-penetrating, standing seam metal roof (SSMR) clamp. The N fits popular 1" nail strips, such as: Bridger Steel 1.5" Tru Snap, Schleich 1.5" NailStrip, Sheet Metal Supply NS 1.5", Sheffield Metals SMI 1.5" and roofing types with similar profiles.

MINI - The N Mini clamp is a more economical solution for lighter-duty attachments where Herculean holding strength is not required.

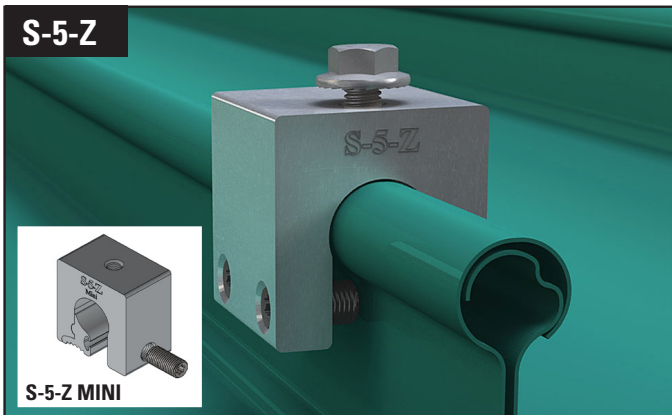
The S-5-NH 1.5 is replacing the S-5-N 1.5!

Bolt not included with Mini



S-5-NH 1.5 Mini PCS/BOX (24)		S-5-NH 1.5 PCS/BOX (24)	
1 - 39	\$5.89	1-23	\$6.39
40-159	\$5.65	24-95	\$6.19
160+	\$5.49	96+	\$5.99

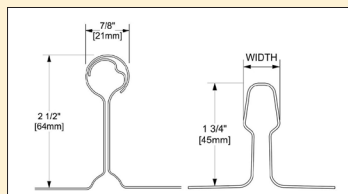
S-5-Z



The S-5-Z clamp is specially developed to fit profiles having a round "bulb" seam configuration. Its two-piece design allows it to be easily installed anywhere along the length of the rib. Fits Zip-Rib, "KalZip", and profiles that have a round "Bulb" shape.

MINI - Fits Zip-Rib, "KalZip", and profiles that have a round "Bulb" shape.

Bolt not included with Mini



S-5-Z Mini PCS/BOX (50)		S-5-Z PCS/BOX (30)	
1-49	\$6.89	1-29	\$7.89
50-149	\$6.65	30-89	\$7.65
150+	\$6.39	90+	\$7.39

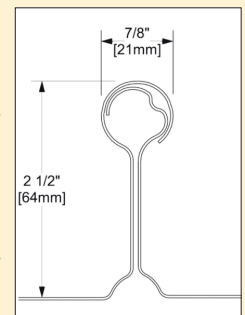
S-5-Q



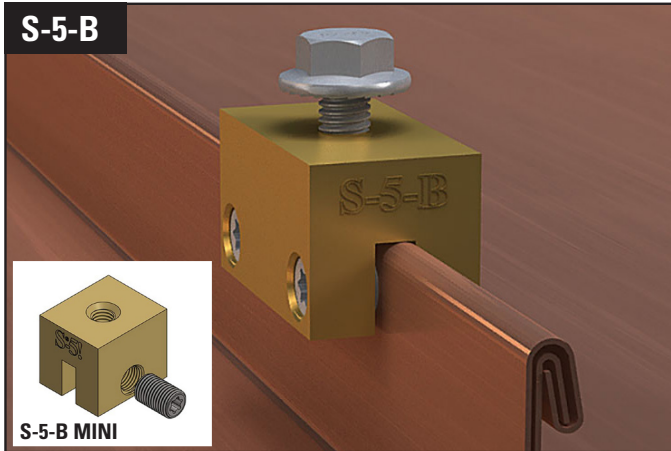
The S-5-Q clamp ("Q" represents the shape of the clamp) allows for the attachment of snow guards and other heavy-duty applications to metal roof panels featuring large, round (such as Zip-Rib®, BEMO, Kalzip®) and similar "bulb" seam configurations. The clamp features a two-piece design that makes it easy to install anywhere along the seam.

MINI - A more economical solution for lighter-duty attachments.

Bolt not included with Mini



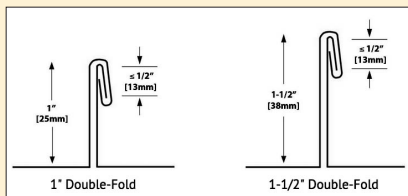
S-5-Q Mini PCS/BOX (25)		S-5-Q PCS/BOX (15)	
1-24	\$7.49	1-14	\$10.49
25-99	\$6.99	15-59	\$11.49
100+	\$6.85	60+	\$10.95



Architects and roof designers choose copper roofing for its timeless elegance and durability. The S-5-B (or S-5-BSF) allows you to maintain that theme when mounting snow guards or utilities on the roof. The visual appeal of copper roofing also makes it a superior roofing type. The B ("B" is for Brass) is designed for double-folded, copper standing seam paneling.

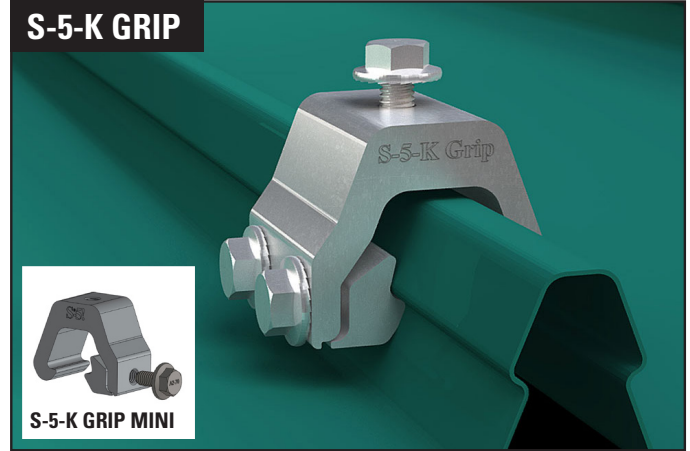
MINI - A more economical solution for lighter-duty attachments.

Bolt not included with Mini



PRICING SUBJECT TO CHANGE!

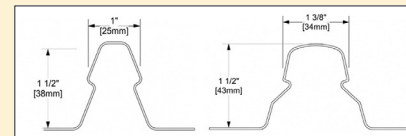
S-5-B Mini PCS/BOX (24)		S-5-B PCS/BOX (40)	
1-23	\$20.49	1-39	\$23.89
24-119	\$19.59	40-199	\$22.79
120+	\$18.95	200+	\$21.19



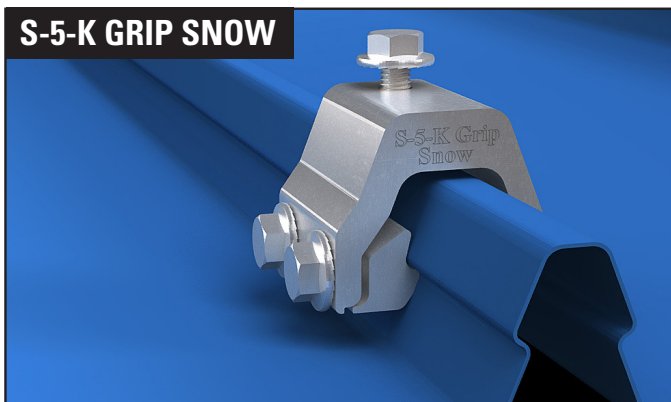
The S-5-K Grip ("K" stands for KlipLok®), is designed to fit the KlipLok and similar profiles. Two different inserts (sold separately) compensate for exact rib dimensions. The K Grip eliminates the large moment arm typical of some competing clamps, and its mounting bolt sits concentrically on the seam, increasing load resistance.

MINI - A more economical solution for lighter-duty attachments.

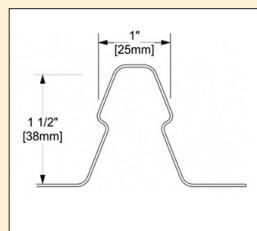
Bolt not included with Mini



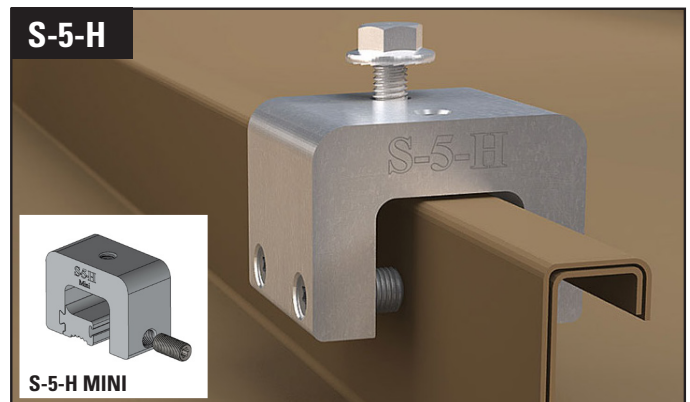
Due to multiple choices for the insert, please see our website for full description, options and pricing!



The S-5-K Grip Snow ("K" stands for Klip-Rib®) has a mounting bolt hole to facilitate use of the S-5-VersaClip for the attachment of ColorGuard systems. Two different inserts (sold separately) compensate for exact rib dimensions. Unlike other S-5! clamps, the K Grip Snow uses side-bolts rather than setscrews for attachment. The flanged-head bolts also prevent over-compression of the seam and eliminates the need for calibrated tensioning. K Grip Snow is available for use with S-5! ColorGuard. The only difference from the S-5-K Grip is the location of the top bolt hole. It is intended to be used in conjunction with the S-5-KHD when more than one row is required.



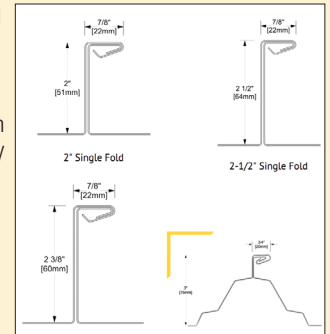
Due to multiple choices for the insert, please see our website for full description, options and pricing!



The S-5-H clamp ("H" is for Horizontal seam) is designed to accommodate horizontal seams that are not fully closed. The setscrews are side-install rather than top-down. When the seam is horizontally-oriented but completely closed, the S-5-H90 clamp is a more economical solution (top-down setscrews).

MINI - A more economical solution for lighter-duty attachments.

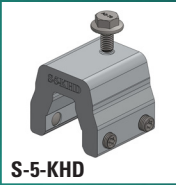
Bolt not included with Mini



S-5-H Mini PCS/BOX (25)		S-5-H PCS/BOX (15)	
1-24	\$7.75	1-14	\$9.85
25-99	\$7.52	15-59	\$9.49
100+	\$7.29	60+	\$8.99

Brackets

S-5-KHD



S-5-KHD



Choose the KHD to mount fall protection, snow guards and other "super-duty" applications to Klip-Rib and similar concealed-fix metal roofs. KHD can be used only at the eave location of pre-existing roofs. When more than one row of snow retention is needed, the S-5-K Grip Snow can be used to supplement with additional rows and does not require the in-seam insert. (Contact sales@metalplusllc.com for design assistance). Lighter-duty applications can be handled with the S-5-K Grip or K-Grip Mini.

Due to multiple choices for the insert, please see our website for full description, options and pricing!

CORRUBRACKET 100T



CorruBracket 100T is affixed to the crest of the corrugation, leaving the drainage plane free of holes to protect against leaks. For medium-duty applications, the bracket can be attached directly to the sheeting, accommodating ancillary attachment anywhere along the corrugation. The CorruBracket 100T is specifically designed to securely and safely attach walkways and other utilities, rail-based PV systems or low-profile, direct-attach, solar mounting with the S-5-PVKIT®. For added height when mounting solar with the PVKIT, check out the CorruBracket 100T PV.

CorruBracket 100T PCS/BOX (60)

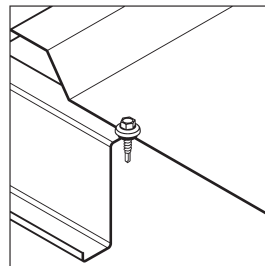
1-59	\$5.56
60-179	\$5.29
180+	\$4.99

Application



12-14 x 1-1/2" ZAC Self drill #3 (3/8" HWH) Assembled EPDM washer Metal to metal

Drilling capacity: .035 – .210"
Thickness is based on normal, single thickness purlin/girt or multiple material thickness combined for total.
Min projection: 3/16" of threads below substrate.



3/8" or 5/16" AF Zinc Aluminum Capped Hex Washer Head
Head Dia: .650"
Thread Major Dia: .215 – .209
Thread Minor Dia: .164 – .157

Strength (lbs ult.):
Tensile: 2900
Torsional: 92 in-lbs
Shear: 2050

Pull-out (lbs ult.):
12 ga (.105): 1524
14 ga (.075): 901
16 ga (.060): 665

Pull-over (lbs ult.):
22 ga (.030): 1647
24 ga (.024): 1310
26 ga (.018): 794

12-14 X 1-1/2" ZAC SELF DRILL #3 (3/8" HWH)

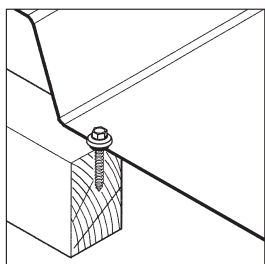
Qty. 250 \$58.95

Application



1/4-14 x 1-1/2" ZAC Type 17 AB Milled point Assembled EPDM washer Metal to wood Metal to metal

Self-Drilling Metal Thickness: Sheet .018 – .030
Thickness is based on normal, single or multiple material thickness combined for total
Min depth penetration into the wood sub structure: 1"



3/8" AF Zinc Aluminum Capped Hex Washer Head
Head Dia: .650"
Thread Major Dia: .246 – .240
Thread Minor Dia: .192 – .185

Strength (lbs ult.):
Tensile: 3800
Torsional: 150 in-lbs
Shear: 2850

Pull-out (lbs ult.):
22 ga (.030): 379
24 ga (.024): 304
26 ga (.018): 204

The Screws Pass S-5 Requirements to Install Their Screw Down Components!

1/4-14 X 1-1/2" ZAC TYPE 17 AB MILLED POINT

Qty. 250 \$58.95

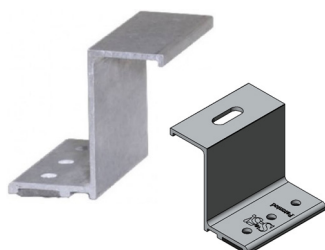
S-5!® Brackets

The Right Way!



Product	PCs/BOX	1 - 99	100 - 299	300+
VERSABRACKET-47	100	\$2.75	\$2.69	\$2.59

VersaBracket™ can be used to mount virtually anything to an exposed-fastened roof system and is compatible with almost any trapezoidal, exposed-fastened profile. The VersaBracket™ comes with factory-applied sealant already in the base for a watertight attachment. VersaBracket™ comes in two heights—the 2.65" VB-67 and the 1.86" VB-47. The VB-67 mounting face has no holes or slots, thus, ancillary items are typically secured using self-tapping screws (not included). The VB-47 offers various mounting face configurations with minimum purchase requirements. See Page 18 for the proper screws.



Product	PCs/BOX	1 - 69	70 - 209	210+
VERSABRACKET-67	70	\$3.64	\$3.59	\$3.49

See Page 18 for the proper screws.



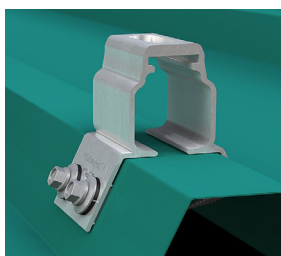
Product	PCs/BOX	1 - 74	75-224	225+
CORRUBRACKET	75	\$6.89	\$6.59	\$5.99

CorruBracket™ can be used to mount almost anything to corrugated metal roofing and is compatible with 7/8" and 3/4" corrugated roofing. Each comes with factory-applied butyl sealant already in the base, and the S-5!® patented reservoir conceals the sealant from UV exposure, preventing drying and cracks. See Page 18 for the proper screws.



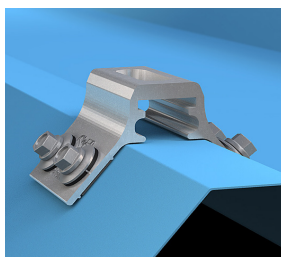
Product	PCs/BOX	1 - 49	50-99	100+
PROTEA BRACKET (solar)	50	\$9.99	\$9.89	\$9.59

ProteaBracket™ is the most versatile exposed-fastened metal roof attachment solution on the market, fitting most trapezoidal sheet profiles. It features an adjustable attachment base and multiple solar module attachment options to accommodate varying widths and heights. Now Made in Aluminum.



Product	PCs/BOX	1 - 44	45-134	135+
RIBBRACKET I-IV™	45	\$5.59	\$5.39	\$5.29

RibBracket I-IV is the right way to attach almost anything to select exposed-fastened, trapezoidal roof profiles marketed in North America, including solar solutions through DirectAttached™ or bottom mount rails.



Product	PCs/BOX	1 - 44	45-134	135+
ORIGINAL RIBBRACKET	45	\$7.75	\$7.49	\$6.89

The RibBracket is the perfect attachment solution for specific North American trapezoidal, exposed-fastened metal roofs. These profiles are commonly referred to as R-Panel or PBR-Panel.

IF ORDERING WITH PV KIT YOU WILL NEED TO ORDER HEX NUTS, EXCEPT W/CORRUBRACKET

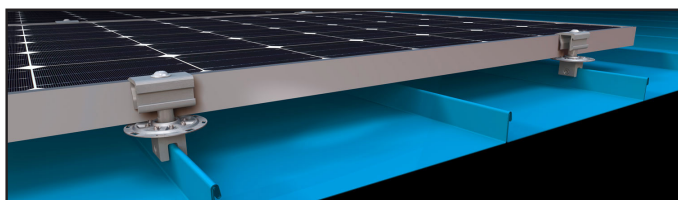


PVKit® 2.0

The PVKit® 2.0 is a revolutionary new solution to attach solar PV panels to standing seam metal roofs!

The concept of combining photovoltaic arrays with standing seam metal roofing is growing—and for good reasons. A standing seam metal roof has a life expectancy consistent with that of framed PV modules—a 30-year power source on a 40-year roof, along with zero-penetration technology, creates the most sustainable roof system available with alternative power generation, all without compromising the roof manufacturer’s warranty! PVKIT® 2.0 is also a great solution for attaching PV modules directly to many exposed fastener roofs when paired with S-5! brackets. S-5! has introduced a new and improved PVKIT, boasting an improved installation experience for PV mounting technology. The kit comes preassembled with either the MidGrab or EdgeGrab for easier and more efficient installation. The kits were designed with thread lock on the standoff bolt so that the grab will seat to the PV Module frame by using one tool to drive the top bolt, eliminating a step required in the previous PVKIT. The PVKIT 2.0 features bonding teeth, which are more aggressive to secure a better ground path. No lugs or wire required except to connect one string of modules to another and to ground the system. **The S-5 PVKIT 2.0 is built to save you time and money — The Right Way® to install solar to your metal roof.**

WARNING! Please consult with a professional before using. Visit www.S-5.com or call Metal Plus LLC for details.



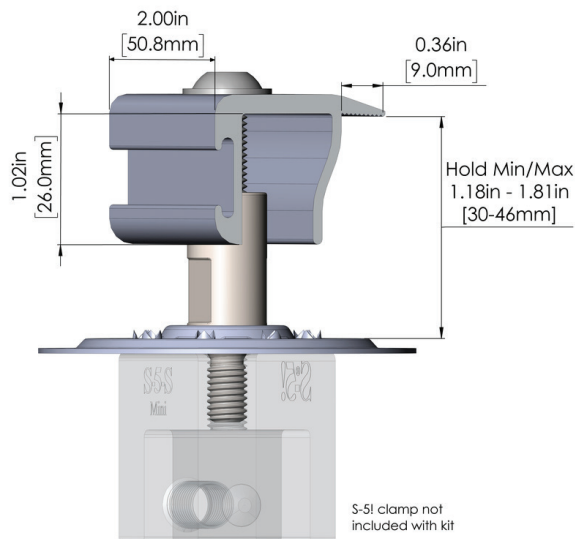
PVKIT® Features:

- Compatible with all S-5! clamps
- Can be used with almost any S-5! attachment bracket
- Pre-assembled components
- Versatile: Same kit for 30-46 mm module frames
- Only one tool needed for installation
- 25% better load distribution

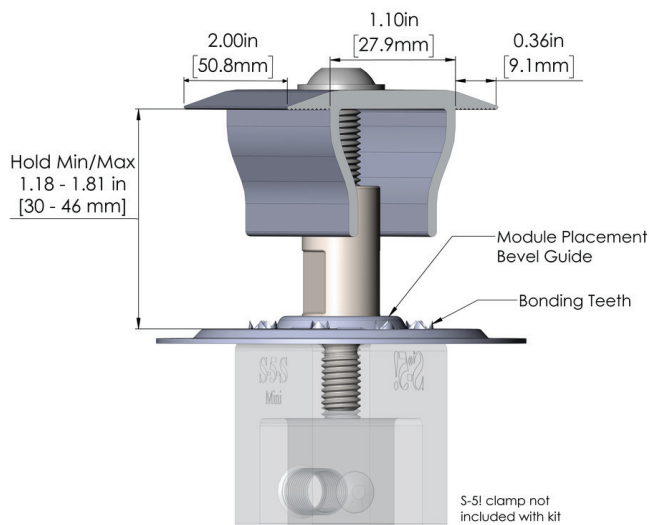
- UL 2703 / EL 2703 listed ground path is automatic
- Multiple slots for wire ties
- Available in black - architectural anodizing
- Allows load reduction per ASCE-7
- Be sure to see many other features on the solar racking overview page

PVKit MidGrab Asmb. PCS/BOX (60) - Add \$1 for Black		PVKit EdgeGrab Asmb. PCS/BOX (60) - Add \$1 for Black	
1-59	\$6.99	1-59	\$6.99
60-179	\$6.79	60-179	\$6.79
180+	\$6.59	180+	\$6.59

PV Kit 2.0™ EdgeGrab



PV Kit 2.0™ MidGrab



* Patents pending. Certain components featured in illustration may not be UL listed. Due to the variety of attachment needs, S-5 PVKit® 2.0 are sold separately from S-5! clamps.

ARE YOU FINDING IT DIFFICULT TO INSTALL SOLAR PANELS ON STEEP STANDING SEAM ROOFS?

Go to our website front page under the S-5! yellow bar and check out How to install solar panels on steep standing seam metal roof without rail systems!

S-5![®] PVKit[®] 2.0
The Right Way!

The PVKit[®] 2.0 is a revolutionary new solution to attach solar PV panels to standing seam metal roofs!

Easy Installation of Solar Panels on Steep Standing Seam Metal Roofs without a Rail System

**Save 40% by using
Metal Plus Brackets
& S-5! PV Kit!**



The SAFEST
The FASTEST
The EASIEST
The BEST!



See Install Video on our home page or our YouTube channel.

For more information visit us at <https://metalplusllc.com/>



A Skellerup Industries Company

EPDM will withstand constant temperatures at the roofline of -58°F to 239°F and 302°F intermittently. For sizes, 1 – 9 colors are gray and black. Color designation is added to the end of the product number. G=Gray, B=Black

DEKTITE ORIGINAL

ROUND BASE

SIZE	GRAY & BLACK PRICE /EA	DEKS #	FIT RANGE	BASE DIAMETER	HEIGHT
MINI	\$4.50	DF100G (gray only)	0"-7/8"	3 5/8"	1 5/8"
#1	\$4.60	DF101___(gray or black)	1/4" -2"	4 3/4"	3"
#2	\$5.29	DF102___(gray or black)	1 3/4" -3 3/4"	6 1/4"	4"
#3	\$5.85	DF103___(gray or black)	1/4" - 4"	7 3/4"	4"
#4	\$8.95	DF104___(gray or black)	3"-6"	9 1/4"	5"
#5	\$10.79	DF105___(gray or black)	4"-7"	10 3/4"	5"
#6	\$14.99	DF106___(gray or black)	5"-9"	12 1/2"	6"
#7	\$19.95	DF107___(gray or black)	6"-11"	14 1/2"	6"
#8	\$24.75	DF108___(gray or black)	7"-13"	16 1/2"	6"
#9	\$49.25	DF109___(gray or black)	10"-18"	25 3/8"	8"



Installation information:



1. Cut Dektite at appropriate pipe diameter marking.



2. Slide Dektite flashing down over pipe.



3. Apply sealant on underside of flexible aluminum base.



4. Press Dektite base onto contours of panel configuration.



5. Fasten Dektite to surface with long life self-drilling fasteners. Apply additional sealant around base if necessary.

FOR LARGE VOLUME ORDERS PLEASE CALL FOR A QUOTE



To order, use the product number under your size and add the color designation, example a # 3 in white would be DF103WH, #5 in dark green would be DF105DG, and #8 in bright red would be DF108BR.

DEKTITE ORIGINAL

ROUND BASE COLORS

SIZE & PRODUCT #'S	COLOR PRICE	FIT RANGE	BASE DIAMETER	HEIGHT	DEKS #
#3-DF103__	\$8.89	¼"-4"	7 4/3"	4"	WHITE - ____WH
					BROWN - ____BN
#5-DF105__	\$15.85	3 ¼"-10"	10 ¾"	5"	TERRA COTTA - ____TC
					DARK GREEN - ____DG
#8-DF108__	\$31.65	7"-13"	16 ½"	6"	LIGHT GREEN - ____LG
					DARK BLUE - ____DB
					LIGHT BLUE - ____LB
					BRIGHT RED - ____BR

#3, #5 & #8's come in all colors listed above – For Installation Information please see page 30



DEKTITE HIGH PITCH

Steep slope metal roof flexible flashing. Built in 400 Degree pitch design provides a water tight seal on metal roof pitches from 35 to 60 Degrees

PIPE EXTERNAL (in.)	PIPE EXTERNAL	ROOF PITCH	BLACK EPDM	RED SILICONE
0-6"	0-159mm	35-65	DFH103B	DFH203B
			\$17.95/per	\$21.95/per

For Installation Information please see page 30



- EPDM Non-High Temp.: Black Color
- Silicone High Temp.: Red Color
- Square Base
- Pipe Sizes 0.25in-6.25in
- Made For Steep Slop Metal Roof Flexible Flashing





A Skellerup Industries Company

Red silicone will withstand constant temperatures at the roofline of -58°F to 392°F and up to 482°F intermittently.



SILICONE HIGH TEMP

SIZE	SILICONE PRICE /EA	DEKS #	FIT RANGE	BASE DIAMETER	HEIGHT
#1	\$10.40	DF201RE	¼"-2 ½"	4 ¾"	3"
#2	\$12.95	DF202RE	1 ¾"-3 ¼"	6 ½"	4"
#3	\$14.99	DF203RE	¼"-4"	7 ¾"	4"
#4	\$28.75	DF204RE	3"-6 ¼"	9 ½"	5"
#5	\$35.49	DF205RE	4"-7"	10 ¾"	5"
#6	\$38.95	DF206RE	5"-9"	12 ¾"	6"
#7	\$57.45	DF207RE	6"-11"	14 ¾"	6"
#8	\$74.89	DF208RE	7"-13"	16 ½"	6"
#9	\$124.75	DF209RE	10"-18"	25 3/8"	8"



Allows for fast, efficient installation, snaps together in seconds, grips tight and stays tight, aluminum base conforms to roof with ease, offers a 20-year warranty. For sizes, 1 – 4, colors are gray and black, non-silicone. Color designation is added to the end of the product number. G=Gray, B=Black, Silicone is RED.

HIGH TEMP RETROFIT ARE NOTED IN RED

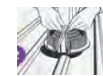
RETROFIT ROUND BASE

SIZE	PRICE /EA	DEKS #	FIT RANGE
#801 (#1)	\$15.39	GRAY OR BLACK: RF801__	¾" – 2 ¾"
High temp	\$22.89	SILICONE: RF901RE	¾" – 2 ¾"
#802 (#2)	\$21.95	GRAY OR BLACK: RF802__	2"-7 ½"
High temp	\$40.75	SILICONE: RF902RE	2"-7 ½"
#803 (#3)	\$44.01	GRAY OR BLACK: RF803__	3 ¼"-10"
High temp	\$69.30	SILICONE: RF903RE	3 ¼"-10"

Installation information:



1. Trim cone to suit pipe size using sharp tin snips.



2. With clip in downstream position, wrap top of cone around pipe and engage metal teeth in opposing pockets starting at the top.



3. To assist locating clip into pocket, place hand behind seam. Fasten clip with pliers or multi-grips, working from top to base. Do not over crimp.



4. Apply sealant to underside of Dektite base and shape to roof by hand.



5. Fasten flashing down and secure clip by placing a fastener either side of clip first.



6. Apply sealant to top of crimp closure and any other potential leak areas.



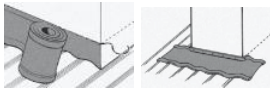
Forms and stretches to solve all those flashing problems to form a tight seal. Flashes hi-rib & standing seam profiles. Flashes between dissimilar materials. Handles vibration and expansion. Creates a paintable surface after weathering and priming. 20 year warranty.

DEKTITE FLASHING

FLASHING

SIZE	PRICE / ROLL	DEKS #
7" x 32'	\$ 153.95	DS10-180
9" x 32'	\$ 175.95	DS10-235
7" x 75'	\$ 278.39	DS23-180
9" x 75'	\$ 298.19	DS23-235
12" x 75'	\$ 359.40	DS23-305
18" x 50'	\$ 387.88	DS15-450
9" x 10'	\$ 68.49	DS3-235

Easy to fix



Square Ducts, Chimney, Skylights

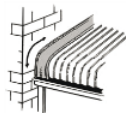
Expand one edge and use separate strips, lapped and joined, to seal around the penetration.

Large Round Pipes



Flash round pipes in one go stretching the lower edge to fit, Join using fasteners or sealant.

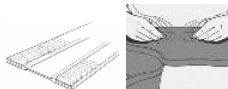
Flash Dissimilar Materials



Dekstrip is compatible with most materials and can successfully flash between:

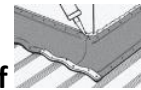
- Brick, Fiber Cement, Galvanized Steel, Aluminum, Stainless Steel, Concrete

Sealant



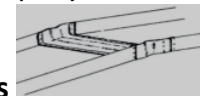
Because of the unique properties of TPE, Deks recommends Butyl Mastic as a sealant in all applications.

Paint to match Roof



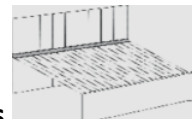
After installation and preferably after a period of "weathering" Dekstrip can be painted with any good quality 100% acrylic paint after priming with an epoxy resin-based primer

Expansion Joints



The flexibility of Dekstrip makes it ideal for box guttering. Ez-strip is required for installation.

Flash Dissimilar Roof Profiles



When flashing dissimilar roof profiles such as a house roof to a verandah, install as follows: (1) Junction gap should be no more than 180 cm. (2) Measure the length. (3) Stretch to suit profile on both sides. (4) When satisfied with the shape and fit and there are no stress lines, seal with Butyl mastic Sealant then screw/rievet fix in the valley/pan of the profile.

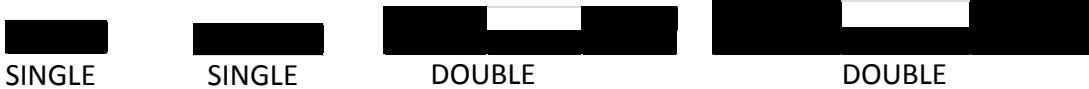


MB-10A is a premier elastomeric butyl rubber sealant designed to meet the critical requirements of metal buildings. It also meets or exceeds all sealing requirements for window glazing, air conditioning, and refrigeration.

MB-10A is extruded on silicone-coated paper for easy application. It is produced in many different sizes and lengths to fit all application requirements. The rolls are packaged in water resistant cartons for convenience in job site storage and export.



ADVANTAGES: MB-10A offers many qualities that result in a superior seal, greater longevity, and easier application, greater cohesive strength, superior adhesive strength, withstands extreme roof temperatures, superior low temperature compressibility, cold flow resistant, resistant to UV light, seal not affected by normal movement of building, wide service temperature range, extensive inventory of standard sizes, available in custom sizes and lengths.



*Illustrations are for demonstration purposes only for actual sizes see table below.

PRODUCT #'S	SIZE	ROLLS/CASE	PRICE/CASE
6797	1/2" X 3/32" X 50'	20	\$51.49
9697	3/4" X 3/32" X 50'	14	\$59.49
11397	1" X 3/32" X 50'	10	\$56.59

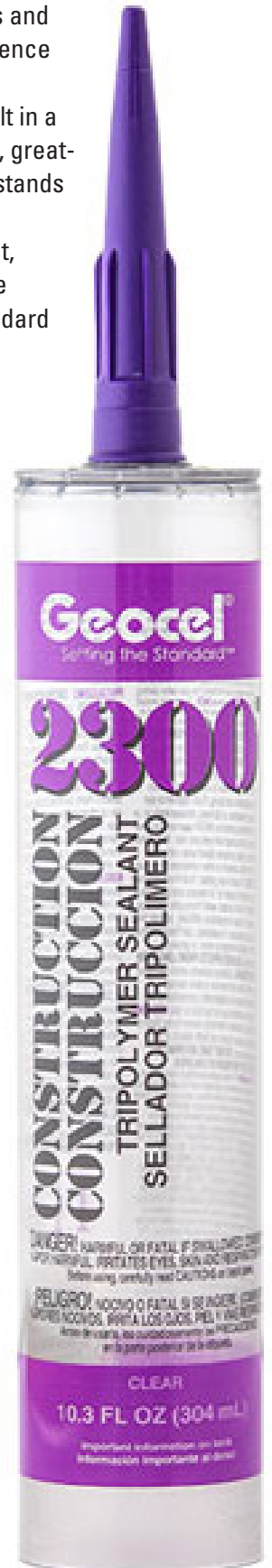
Geocel®

Setting the Standard
In a Clear Plastic Tube

GEOCEL 2300 CLEAR

2300 Construction Tripolymer Sealant is a single component, high elastomeric sealant for use in a wide variety of roofing, trim, architectural metal, manufacturing, under deck system, solar roof system and general construction applications.

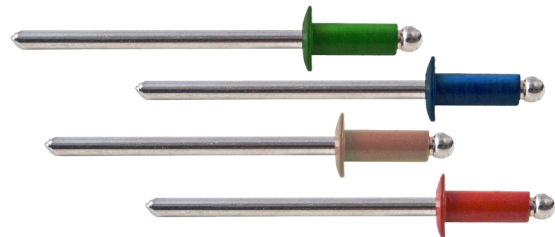
SIZE	GEOCEL #	CTN QTY	CTN PRICE	PRICE EACH
10.3 OZ	GC66900	24	\$184.56	\$7.69
10.3 OZ	GC66900	Less than a carton, cost per tube		\$7.99



FOR LARGE VOLUME ORDERS PLEASE CALL FOR A QUOTE

LAKESIDE FASTENER 40 COLOR CHART FOR RIVETS AND SCREWS

			
Bright White (BW02)	Slate Gray S19 (SL05)	Crimson (CS01)	Brown 01 (BN01)
			
Arctic/Brilliant (AB01)	Charcoal 17 (CH06)	Bright Red (BR02)	Brown 02 (BN02)
			
Bone White S03 (BW05)	Charcoal S01 (CH05)	Rustic (RU01)	Burnished Slate 49 (BS06)
			
White 39 (WH06)	Colony (CO01)	Barn Red (RD03)	Dark Bronze S04 (DZ05)
			
White (WH02)	Emerald Green (EG02)	Colonial Red S10 (CR05)	Black (BK02)
			
Prairie Wheat (PW02)	Hunter (HG01)	Burgundy 01 (BU01)	Hawaiian Blue 70 (HB06)
			
Ivory (IW01)	Forest (FT01)	Burgundy 02 (BU02)	Ocean (OC01)
			
Light Stone 01 (LS01)	Fern (FR01)	Gray (GR01)	Ocean Blue 35 (OB06)
			
Light Stone 03 (LS03)	Mocha Tan 22 (MT06)	Ash Grey 25 (AG06)	Gallery (GB01)
			
Surrey Beige S21 (BE05)	Tan (TN03)	Taupe (TP01)	Copper Metallic (CM01)



PART #	PRODUCT	SIZE	GRIP RANGE	RIVETS PER BAG	PRICE
43SS250BRSG	Painted Stainless 43 Pop Rivet	1/8" X 3/16"	0.126" - 0.187"	250	\$16.95

PRO CLIPLOK™

PRO CLIPLOK™ Pancakes

Threads: 12 per in. / SD3: 16 per in.
 Innovation: Reinforced Flute
 Cut Point: Type-17/Self-Driller #3

PRO CLIPLOK™ Wafers

Threads: 12 per in. / SD3: 16 per in.
 Innovation: Reinforced Flute
 Cut Point: Pierce Point/Self-Driller #3



Pancake Self-Tappers

Sizes: 1", 1-1/2", 2"
 Material: C1022 & Stainless



250 QTY BAG of SCREWS	
1"	(12 bags) \$142.68
1½"	(10 bags) \$118.90
2"	(8 bags) \$95.12

SOLD BY CARTON ONLY!

Wafers/X-treme Lo Self-Tappers

Sizes: 1", 1-1/2", 2"
 Material: C1022 & Stainless



250 QTY BAG of SCREWS	
1"	\$10.95 / Bag
1½"	\$12.95 / Bag
2"	\$15.89 / Bag

Pancake Self-Driller

Sizes: 1", 1-1/2", 2"
 Material: C1022 & Stainless



250 QTY BAG of SCREWS	
1"	(12 bags) \$142.68
1½"	(10 bags) \$118.90
2"	(8 bags) \$95.12

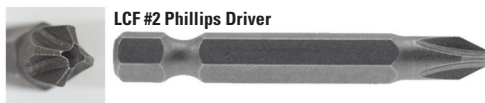
SOLD BY CARTON ONLY!

Wafers/X-treme Lo Self-Driller

Sizes: 1", 1-1/2", 2"
 Material: C1022 & Stainless



250 QTY BAG of SCREWS	
1"	\$10.95 / Bag
1½"	\$12.95 / Bag
2"	\$15.89 / Bag



Drivers	
	\$2.29 ea

CALL FOR PRICING – 40 COLORS AVAILABLE SEE PAGE 30

10 WOOD-X

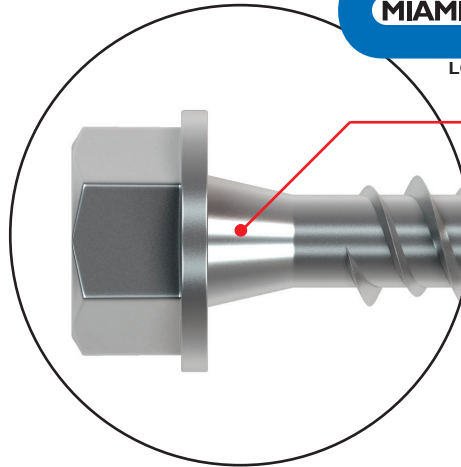
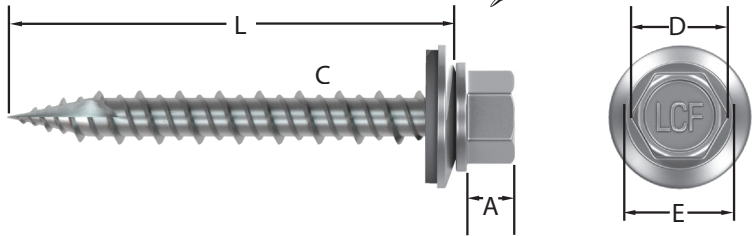
MIAMI-DADE COUNTY

LISTED

LCF #21-0506-02



WOOD-X™



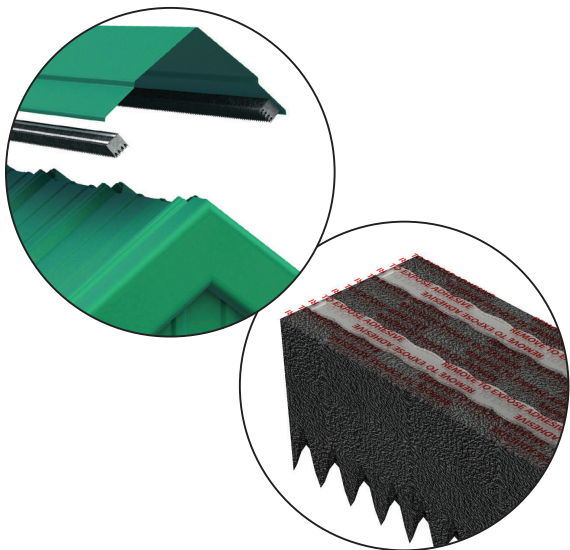
• Reinforced Flute under fastener head!



Part #	L	A	C	D	E
1010250EWLPSG	1"	.140	.198	1/4"	.340
1015250EWLPSG	1 1/2"	.140	.198	1/4"	.340
1020250EWLPSG	2"	.140	.198	1/4"	.340
1025250EWLPSG	2 1/2"	.150	.199	1/4"	.350
1030250EWLPSG	3"	.150	.199	1/4"	.350
1040250EWLPSG	4"	.150	.199	1/4"	.350

T17 WOOD-X™ flute located under the head of the fastener is engineered and reinforced for high torque environments. With quality a major focus for Lakeside Construction Fasteners the **T17 WOOD-X™** can be used with all battery operated screw guns including **Impact Screw Guns!** The **T17 WOOD-X™** is the fastener of choice by contractors for post frame and residential applications!

T17 WOOD-X 250 QTY BAG of PAINTED SCREWS
Starting at \$10.45 / Bag



SC110VENT™

Your Complete Ridge Venting Solution!

The **SC110VENT™** by Lakeside Construction Fasteners offers installers and contractors an affordable premium venting system with one of the lowest in place cost! The patented design of the **SC110VENT™** open cell structure prevents water, dirt, and snow from penetrating the building structure at the ridge cap. **SC110VENT™** promotes positive air ventilation throughout the building envelope which starts at the ridge cap! The special formulated UV Coating allows the **SC110VENT™** to resist high temperature environments and prevents the open cell structure from collapsing! The **SC110VENT™** is Your Complete Ridge Venting Solution!

BRAND NAME	DISCRIPTION	ROLLS PER CARTON	PRICE PER CARTON
SC110 VENT	1 ¼" X 10'	10	\$154.00
SC110 VENT	1 ½" X 10'	10	\$184.00
SC110 VENT	2 ¼" X 10'	10	\$249.00

Note: Comes with Adhesive

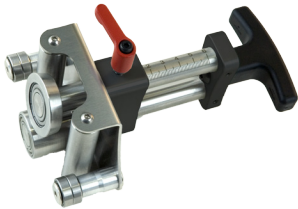
LESS THAN CARTON QUANTITIES ADD 10% PER ROLL.



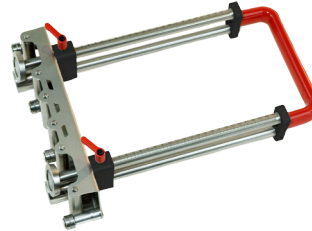
BIEGETEC SHEET METAL ROLLER BENDERS

The advantage of having easy portable roller benders, one can be passed 90° without scratching the sheet metal and the other roller hemmers can finish it off to 180° making perfect hem. With roller benders there is no need to carry a 10' heavy bulky brake and being limited to bending only 10', you will have no restrictions on the length you want to bend.

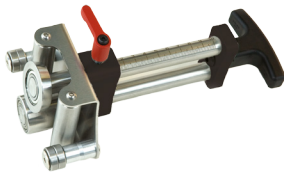
The roller benders are also adjustable for various gauge of sheet metal. Biegetec roller benders are capable of bending 24ga steel, 20oz copper, .040 aluminum and 1 mm zinc.



\$319
Bender S-60
Depth from 1/4" to 2.5"



\$599
Bender XL-250
Depth from 1/4" to 9.8"



\$349
Bender S-100



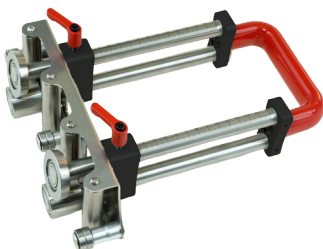
\$299
Roller S Model
Hem depth from .31" to 1.68"



\$359
Bender S-150
Depth from 1/4" to 6"



\$579
Roller XL Model
Hem depth from .31" to 1.68"



\$549
Bender XL-150
Depth from 1/4" to 6"



\$289
Perfect Bender 20/50
Depth from 3/4" to 2"



DOUBLE SEAMER PVC FOR MECHANICAL STANDING SEAM

The Double Seamer PVC will bend single lock and double lock seams with one tool.
NO MORE RUSTY HAND SEAMER SCRATCHING THE PANEL!



\$289



EAVE CLOSER PVC

The Eave Closer PVC is designed to hem the standing seam panel around the drip edge.
NO MORE RUSTY EAVE CLOSER SCRATCHING THE PANEL!



\$199



REPLACEMENT PVC PARTS CAN BE ORDERED ONLINE OR CALL 860-379-1327.

JETCO PRODUCTS WACHTEL PANEL CUTTER

WACHTEL SHEET METAL PANEL CUTTER Perfect for Metal Roofing and Metal Lath.


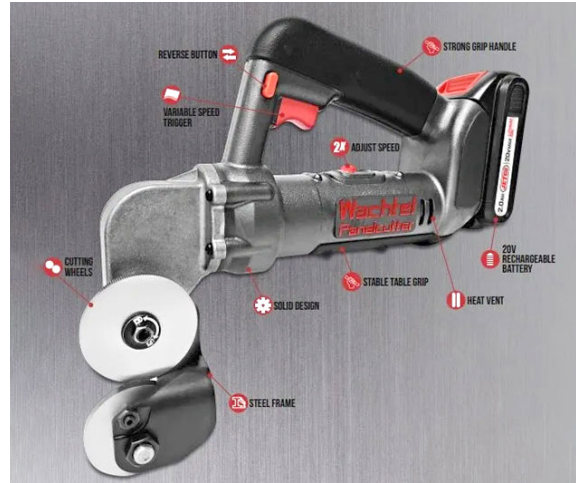
The Wachtel Panel Cutter is a battery powered handheld solution perfect for cutting sheet metal, metal roofing, and metal lath. Cut precisely and safely with our variable speed design without the hazard of metal shavings or sharp edges.

APPLICATIONS:

Metal Roofing | Metal Lath | Gutters | HVAC | Fabrication

ADDITIONAL FEATURES:

- Cuts up to 24 Gauge thick material - Metal and Composite
- No Burrs, Jagged Edges, or Mess
- Variable Speed Trigger
- No sparks & Quiet Operation
- Reverse Switch
- Adjustable Speed
- High Strength Cutting Wheels



**Wachtel Panel Cutter
Tool Only**
\$400.00

**This Option Does NOT Include Battery or Charger.
HOWEVER, is compatible with DeWalt Batteries
12 volt to 20 volt Li-ion*



**Wachtel Panel Cutter
with Battery and Charger**
\$450.00

**Included in Box – Wachtel Panel Cutter Tool,
20v 2.0AH*

Try Our New Online Store Today!

Metal Plus Catalog Products Available Online Now!



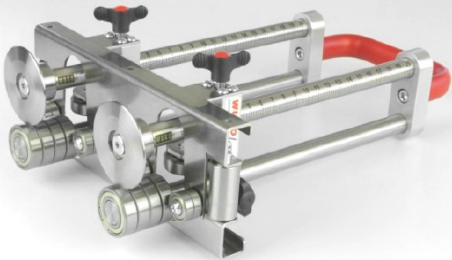
METAL PLUS

METAL ROOFING TOOLS AND ACCESSORIES **LLC**

ALL OF OUR BRACKETS
ARE MADE IN THE USA!

860-379-1327 METALPLUSLLC.COM

WUKO® Benders - Cutters - Seamers



The NEW WUKO HEM Bender 8200

- for bending up from 6 - 200 mm
- for making the hem (height of hem 14 mm)
- using bending discs enables closer bending

Comes with New Carrying Case!

8200

\$949.95



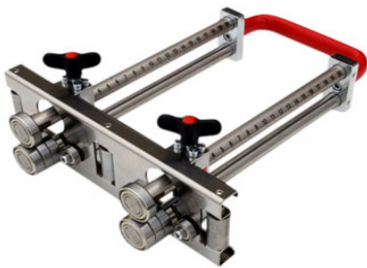
WUKO Disc-O-Bender –

Starts at 90 degrees and bends up to 180 degrees (hem). The tool was designed for bending long, straight sheet metal strips. It's very easy to handle. It is the ideal supplement to the WUKO Duo Bender. Bending height: 8-40 mm/0.3-1.6".

Comes with New Carrying Case!

4000

\$689.00



WUKO Duo Bender 3202

– The WUKO Duo Bender 3202 was especially designed for quick and easy bending of long, straight sheet metal strips. Its function is equal to that of the WUKO Uni Bender, but it's equipped with a second pair of bending rolls and a handle.

Comes with New Carrying Case!

3202

\$699.89



WUKO Disc-O-Bender Twist 4040

– No free space required at the side for setting the tool on or off. Just twist the roller stop by means of the locking bolt, place the tool on the right angle bend, twist the roller stop back and start bending. The bigger bending disc, (as Model 4010) enlarges the bending height.

4040

\$479.00



WUKO Bender Set 2050/4040

- WUKO Mini Bender 2050 for Bending/Forming up to 90°
- WUKO Disc Bender Twist 4040
- The ideal combination for bending/forming straight and curved pieces up to 90° and then for bending from 90 up to 180° – making a hem.
- Delivered in a handy carrying case!

2050 / 4040

\$ 779.00



WUKO Bender Set

3202/4000 – This couple enables quick, easy and clean bending/forming long, straight sheet metal strips up to 90 degrees to 180 degrees (hem). Delivered in a carrying case.

- 1 pc. WUKO Duo Bender 3200 and
- 1 pc. WUKO Disc-O-Bender 4000
- Including carrying case (Heavy size 4)

3202 / 4000

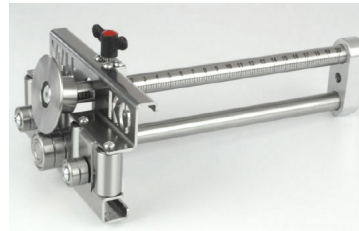
\$1298.44

WUKO®

Benders - Cutters - Seamers

Please go to our website at www.metalplusllc.com for pricing information, or call us if you have any questions on the following WUKO tools and accessories:

Cutter 1070	\$499
Clipper 1020 C2A	\$1,629
Clipper 1020 C2E	\$1,595
Lock 'n' Roller 1040	\$999
Sprinter 0410	\$5,779
Micro Disc-O-Bender 4050	\$469
Mini Bender 2050	\$349
Uni Bender 2204	\$389
Duo Bender 3352	\$645
Mini Disc-O-Bender 4010	\$375
Micro Disc-O-Bender 4050	\$469



WUKO Disc-O-Bender –

- Clean bending up to/over 90°
- The protection of delicate materials
- Spring back materials
- Bending along longitudinal beadings
- Bending capacity: 0.80 mm/24 gauge (for all common materials)

6200

\$529.00



WUKO MINI Bender 2020 The Specialist for Curves!

WUKO Mini Benders for bending up to 90° especially on small radii (inner as well as outer radii)

- Max. bending height: 20 mm/0.78"
- Min. bending height: 5 mm/0.2"
- Bending capacity: 0.80 mm/0.031" (for all common materials)
- Weight: 0.63 kg/1.4 lbs



2020

\$349.00



WUKO Bender Anniversary Set 2050 / 2204 / 4040

- 1 pc. WUKO Mini Bender 2050
- 1 pc. WUKO Uni Bender III 2204 and
- 1 pc. WUKO Bender Twist 4040
- Including carrying case (Heavy size 3)
- Anniversary folding ruler

2050/2204/4040

\$1195.00



Seamers and Decoilers



ESE001C

\$185.00

Single lock hand seamer, forms the 90 degree bend, works in hard to reach places, will not scratch or peel, this tool can be used on profiles that measure 1/2" across the top, for a double lock pair up with the ESE 099 finish hand seamer. Made in the USA.



ESE099

\$299.00

Double lock hand seamer, forms the 180-degree bend, for hard to reach places or to seam a whole roof, lightweight and easy to use, for use with painted or unpainted material, will not scratch or peel paint, note: before using this tool prepare the seam with the 001 or 001c to a single lock bend. Made in the USA.



STANDARD DECOILER

\$1,825.00

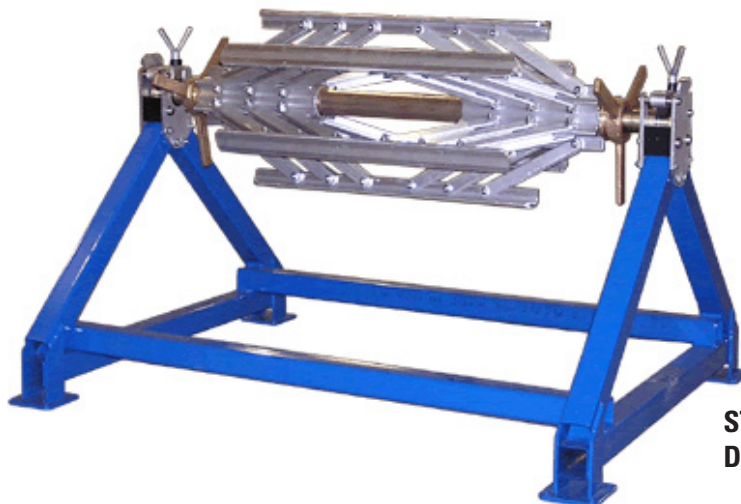
6-prong core, single locking spider system, friction brakes, core expands from 15" to 21". 3000 lb. capacity, 34" max coil. Made in the USA.



ESEDECMINI

\$1,625.00

6-prong core, single locking spider system, friction brakes, core expands from 15" to 21". 3000 lb. capacity, 24" max coil. Made in the USA.



STANDARD DECOILER



Hand Tools

Just the right tools for crimping, bending, folding or seaming metal. Today, Malco continues the tradition of quality and innovation, and distributes thousands of products from its Annandale, MN headquarters to trade professionals in the U.S. and around the globe. A proud heritage for a promising future.



Hand Seamers with Forged Steel Jaws – Redline

- The handle opening of Malco's RED-LINE gripped tools maximizes the powerful leverage of compound head-to-handle linkage while

providing a more comfortable operating range for your hand. Ergonomic handle contours with an over-molded, non-slip handle insert assures a natural fit and feel for the way you work. Easy one-hand operation, including an easy open and close latch motion, always leaves a free hand to steady work piece.

S3R

\$68.49



Hand Seamers with Forged Steel Jaws - Redline

- Features wide 6" jaws that produce uniform, accurate bends in sheet steel and non-ferrous metals with greater control and efficiency.

Wider jaws also minimize buckling and bowing of metal. Fewer strokes are required to bend and straighten angles. Designed for all metal trades including HVAC installation, roofing and siding applications and commercial building and remodeling.

S6R

\$86.59



Folding Tool: High Leverage Drip Edge –

For quick bends in standing seam panel edges. Works on installed panels or on a workbench for pre-bending panels. Makes up

to 1-1/2" (24" wide) deep bends along drip edge of roofing panel.

DEFT

\$89.95



Offset Crimper – Redline – A

unique blade design keeps handles offset and keeps hands off work obstacles such as floor joists and underlayments. The handle design also promotes correct gripping of

tool resulting in less wrist fatigue. Longwearing steel components are nickel plated to resist elements. Ergonomic Redline Handles with unique one hand operation latch offer maximum compound leverage performance and natural fit.

TSHD

\$124.49



TSHD



Tekton Torque Wrench

Tighten set screws with this precision torque wrench. Mechanical design does not require batteries and all steel construction has no plastic parts to break or wear out. Read in inch, pounds, or Newton meters. Reversible ratcheting head that drives fasteners in both directions and measures torque in the clockwise direction. Wrench emits a click that can be heard and felt when the preset value is reached. Ships pre-calibrated to +/-4% and ready to use. Store at its lowest setting when not in use.

MODEL NUMBER	PRICE EACH
24320 TEKTON	\$68.95
1/4" sq. dr.20-200 in. lbs. torque	



KD-446

Profile Shear with left hand blades. Cuts profile and flat materials up to 18 gauge C.R. mild steel, soft non-ferrous metals like aluminum, copper and brass to .090; spiral duct, wire mesh and many other materials. These snips are extremely light and maneuverable at 5 pounds, the KD-446L can cut tight curves at a radius of three inches. The blades are made of high quality steel, heat treated and precision ground. The motor is variable speed up to 2500 RPM and cuts up to 28 feet per minute. U.S. Patent # 7,971,360.

MODEL NUMBER	PRICE EACH
KD-446	\$249.00



KD-400

Replacing the KD-200, these variable-speed, double-cut shears feed quickly and quietly, without warping or bending your finished piece (distortion is in the waste strip). It easily follows a scribed line. The materials edges are not hardened or burred, so you get maximum use of a sheet. The swiping action of blades seals the edge of coated metals. These shears cut C.R. mild steel up to 18 gauge in straight or contour lines at over 300 inches per minute, most grades of stainless, aluminum to .080 and plastic or Formica up to 3/32" thick. These shears are also available with a contour cutting blade 60-21C to cut tighter curves and the HS blade 60-21HS for cutting foam filled doors. (Standard blades – Kit #102)

MODEL NUMBER	PRICE EACH
KD-400	\$189.95



KETT #102

18 GAUGE BLADE KIT includes: 1 ea. 60-21, 60-22L, 60-22R, 60-27. Use with KD-200.

MODEL NUMBER	PRICE EACH
KETT# 102	\$49.95



Snow Retention



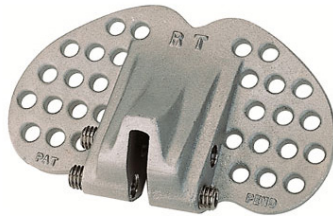
RT SNOW GUARD SERIES

Berger RT Snow Guards are **non-penetrating devices, which** are secured to the standing seams of metal roofs utilizing stainless steel set screws to clamp them in place. They require no glues or sealants, and will not restrict thermal movement or contribute to unsightly oil-canning. RT Snow Guards are available in cast aluminum and cast bronze, and in two sizes to accommodate differing seam widths. They are particularly suited to double-lock and mechanically seamed metal roofing, and being traditional in design, they are ideal for restoration and preservation work. Available in Mill Finish, Black Primer* or Custom Colors.

RT-200 - Designed to accommodate seams of up to 3/16" (0.188" thick) and suited for use with light gauge sheet metals such as 40lb. terne, 26 gauge galvanized, 16-ounce copper and TCS.

RT-300 - Designed to accommodate seams of up to 9/32" (0.297") in thickness and suited to heavier gauge metals such as 20-ounce copper, 24 gauge prefinished metal and products of similar thickness.

MODEL NUMBER	PRICE EACH
RT-200 or RT-300 Mill	\$20.95
RT-200 or RT-300 Cast Bronze	\$28.95
RT-200 or RT-300 E-Coat Epoxy	\$23.95
RT-200 or RT-300 Custom Color (9 Standard Colors)	\$30.79
(Discount pricing on orders of 300 or more pieces of the same-call us)	



AP SNOW GUARD SERIES

Berger AP Snow Guards are non-penetrating devices, which have been engineered specifically for use with the more popular structural and non-structural preformed and architectural metal roof systems. They are secured without glues or sealants, and utilize custom milled stainless steel set screws to clamp them in place. They are produced in cast aluminum, and are available in three different seam widths and heights. The attachment of the AP Snow Guard does not restrict thermal movement, and the deep throat permits it to be secured directly without damaging caps or compressing internal gasketing or sealant pockets. The wide, deep blade design makes it particularly effective in retaining snow with the higher seams and wider panel widths common in preformed architectural roofing. Available in Mill Finish, Black Primer* or Custom Colors.

AP-400 - Designed to accommodate seams of up to 3/8" (0.400") in thickness and at least 1-1/2" high, including snap-lock interlocking panels.

AP-516 - Designed to accommodate seams of just over 1/2" (0.516") in thickness and at least 1-1/2" high.

MODEL NUMBER	PRICE EACH
AP-400 or AP-516 Mill	\$31.95
AP-400 or AP-516 E-Coat Epoxy	\$35.69
AP-400 or AP-516 Custom Color (9 Standard Colors)	\$41.59

(Discount pricing on orders of 300 or more pieces of the same-call us)

Snow Meister



SL-1 Snow Guard Series

The SL-1 Snow Meister Snow Guards fit single lock T seam roofs that are 1.0" deep x .575" wide. The symmetrical design rotates 180 degrees to match seam lock orientation. The SL-1 Snow Guards are available in Mill Finish (**SL-1MF**), Black E-Coat Primer (**SL-1EBK**) and Custom Colors (**SL-1C**).

MODEL NUMBER	PRICE EACH
SL1MF-Mill Finish	\$22.95
SL1EBK-Black E Coat Primer	\$25.95

(Discount pricing on orders of 300 or more pieces of the same-call us)



SG-1 Snow Guard Series

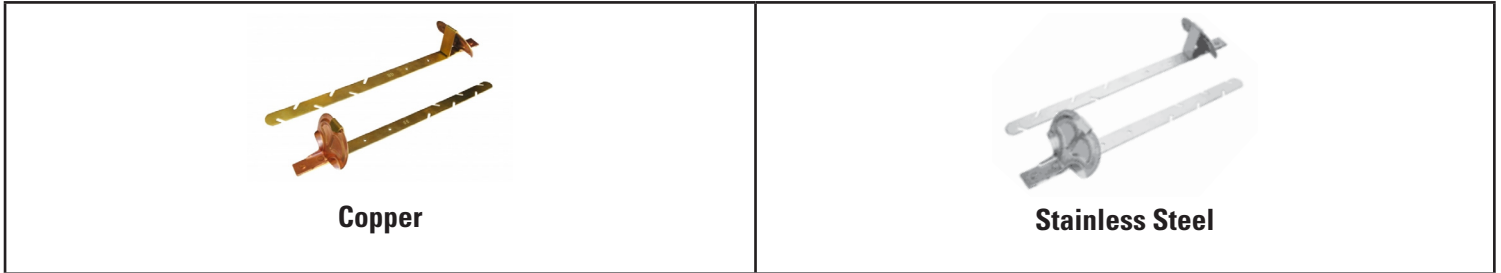
The SG-1 Snow Meister Snow Guards are used for a traditional double lock standing seam roof that is 1.0" deep x .250" wide. These guards fit both 1" and 1-1/2" high seams. The symmetrical design rotates 180 degrees to match seam lock orientation. The SG-1 Snow Guards are available in Mill Finish (**SG-1MF**), Black E-Coat Primer (**SG-1EBK**), Custom Colors (**SG-1C**) and Polished Bronze (**SG-1PBZ**).

MODEL NUMBER	PRICE EACH
SG1MF-Mill Finish	\$21.95
SG1EBK-Black E-Coat Primer	\$25.79
SG1PBZ-Polished Bronze	\$34.89

(Discount pricing on orders of 300 or more pieces of the same-call us)

Installation for Bronze Guard™ Snow Guard Series

Installation for Models #100, #200, #300, and #400: Snow Guards are installed in a series of rows placed parallel to the eave. Guards should be spaced no more than 24" apart in the horizontal rows. The number of rows and the vertical spacing between rows are determined by the pitch and length of the rafter. The most effective placement is an even spacing of the array over the lower 2/3 of the roof surface. Other variables such as upper roofs, dormers and valleys should be considered when determining a layout.



PRO 100 SNOW GUARD ASSEMBLY (HEAVY DUTY) - FOR ASPHALT SHINGLED, SLATE AND TILE ROOFS

Developed for areas that experience heavier snow loads. This heavy-duty Snow Guard is available in Copper (**SGCP100**) or Stainless Steel (**SGSP100**). The superior design features a 1-inch gusset that reinforces the shoe, which makes this Snow Guard 5 times stronger than traditional residential Snow Guards. The Pro 100 has been tested to withstand a 300-pound point load at any location when applied to the gusset side of the shoe.

MODEL NUMBER	PRICE EACH
SGCP100	\$17.82
SGSP100	\$12.68



No. 100 Snow Guard Assembly - For Slate and Asphalt Shingled Roofs

This guard has eliminated the necessity of removing slate, avoiding the possibility of breakage. Simply insert the slotted bar under the slate or shingle, engage a nail with one of the conveniently placed slots and pull down to fully secure bar. This style Snow Guard provides fast installation and is ideal for existing or new construction applications with asphalt shingled roofs. This Snow Guard is available in Copper (**SGC100**), Stainless Steel (**SGS100**) or Hot Dipped Galvanized (**SGG100**).

MODEL NUMBER	PRICE EACH
SGC100	\$16.18
SGS100	\$11.40
SGG100	\$7.51



Modified No. 100 Snow Guard Assembly - For Asphalt Shingled Roofs

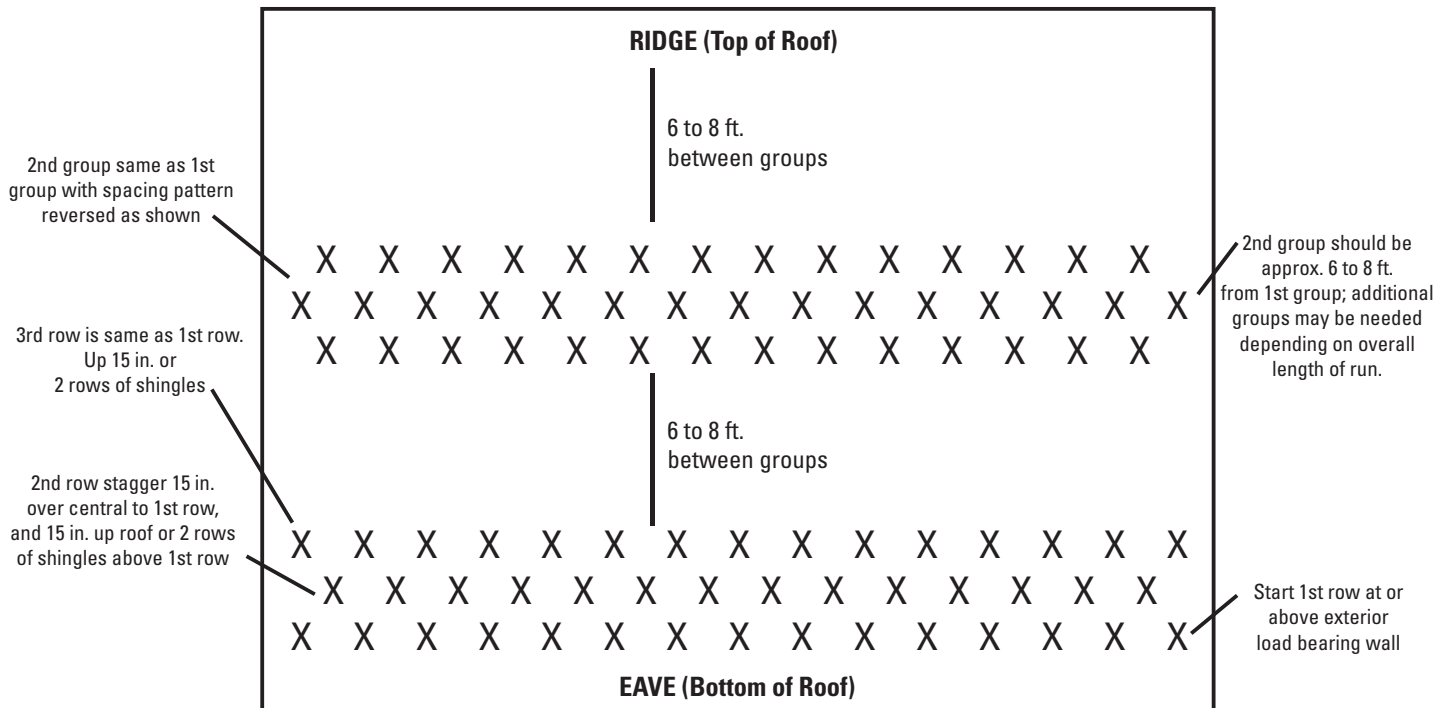
This guard is a modified Berger #100 Snow Guard. The #100 shoe is attached to a shorter, solid bar/strap, and is designed for easy installation on shingle roofs. This Snow Guard is available in Copper (**SGC100HP**) or Stainless Steel (**SGS100HP**).

MODEL NUMBER	PRICE EACH
SGC100HP	\$14.68
SGS100HP	\$10.41

Positioning of Berger snow guards required for effective use: 1 every 40" over the entire roof, or 20 groups of 3 staggered rows on 30" centers with 1 group at the eave and 1 group midway on the roof slope. On long slopes, multiple groups with 6 ft. space separation maximum. **Snow guards should never be placed beyond the bearing wall on an extended roof section. This can result in ice damming and cause structural damage.**

SNOW GUARD PATTERN REQUIREMENTS TYPICAL FOR SHINGLED ROOFING

Berger will provide a custom snow guard pattern recommendation. Please contact us at 800-523-8852, ext. #114, for your custom layout. Snow guard patterns provided by Berger are only recommendations. Actual snow guard patterns should be approved by a licensed architect.



SURE-BOND

SB-190 High Strength Adhesive Caulks



SB-190

MODEL NUMBER	PRICE /EA
SB-190	\$16.39

Berger recommends Surebond Everseal (SB-190)* when using adhesive to install the CL Snow Guard. This product has been proven in the industry for this particular use. SB-190 requires 28 days (672 consecutive hours) of 50 degrees Fahrenheit, or warmer temperatures to fully cure to 2000-psi shear tensile strength. If these conditions cannot be met, Surebond Everflex (SB-1800)***, a cold weather sealant that sets in 24 hours and fully cures in 48 to 72 hours in temperatures as low as (-20F) to 500psi shear tensile strength, should be considered for sealing mechanical fastened snow guards when temperature does not permit use of SB-190 adhesive. Berger recommends SB-190 as the strongest adhesive. In any case, of adhesive bond failure, there is no warranty by Berger for the adhesive. SB-1800*** SB-190*

Return Policy – Metal Plus Roofing Brackets ONLY

This portion of the return policy is strictly for Metal Plus LLC Standing Seam Metal Roofing Brackets. Return complete, undamaged brackets within 10 days of purchase with receipt or confirmation, if you are not satisfied with the product. We offer a full money back guarantee if you are not completely satisfied with your purchase from Metal Plus, LLC. There are no restocking fees - just pay shipping and we will gladly credit you in full. After 10 days and up to 30 days, there is a 20% restocking fee.

This return policy does not apply to distributor returns. Please see below for distributor information.

You may purchase merchandise from us by using any one of the following payment options credit card, c.o.d., electronic fund transfer or advance payment.

Metal Plus LLC reserves the right to change its payment procedures at any time without prior notice to you. Metal plus LLC reserves the right to change pricing on any or all products without prior notice.

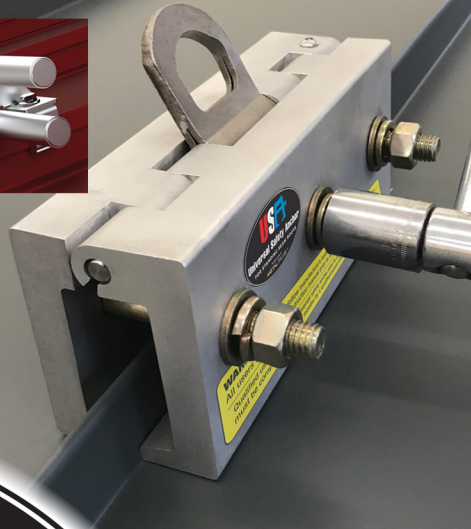
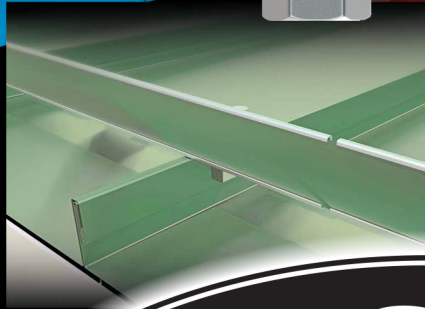
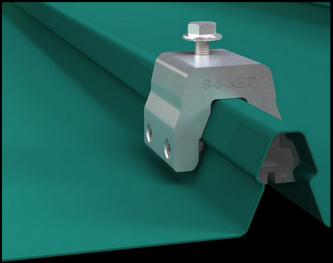
Return Policy – Other Products

Custom fabricated, custom cut products or special orders are non-refundable or returnable.

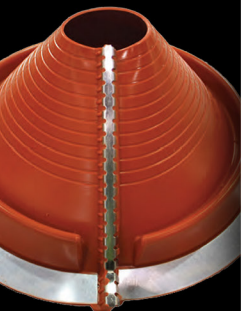
All other standard products may be returned within 30 days of the purchase date and Metal Plus LLC will refund your purchase price less our shipping costs plus a 20% re-stocking fee. You must notify Seller of your intent to return by email at sales@metalplusllc.com or by calling (860) 379-1327 and receive an RA# prior to returning any goods. You must accompany the returned shipment with a copy of your receipt and the issued RA#. Refunds will not be made on returned merchandise received without an issued RA#. A credit card refund, in house credit, or check will be issued within 30 days after the return is received. You will be responsible for payment of the return shipping and handling charges. The merchandise must be in re-saleable condition and properly packaged in order to receive a refund. Refunds cannot be processed for items that are returned in poor condition. It will be the responsibility of the Buyer to initiate any claims through UPS or other carriers as to items damaged in return shipment.

Return Policy – Distributors

Distributor returns will be charged a 50% re-stocking fee, **no exceptions**. You are responsible for shipping/handling and applicable taxes. This policy applies to domestic and international distributors.



USA
Universal Safety Anchor
 FOR STANDING SEAM ROOFS
 Product Line of
METAL PLUS LLC



METAL



PLUS
LLC



214 WALLENS HILL ROAD, WINSTED, CT 06098

860-379-1327 • FAX: 860-379-6016

SALES@METALPLUSLLC.COM

METALPLUSLLC.COM

